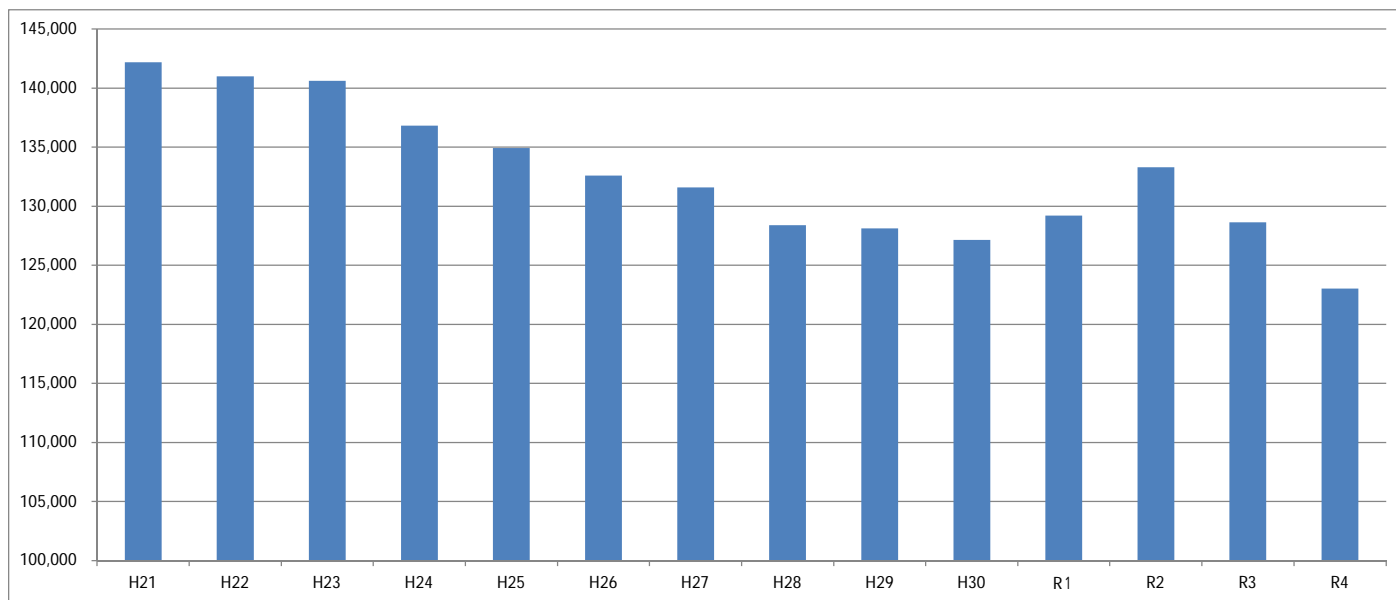


### ごみ量の推移

練馬区における区収集ごみ量の推移(可燃・不燃・粗大)

(単位:トン)

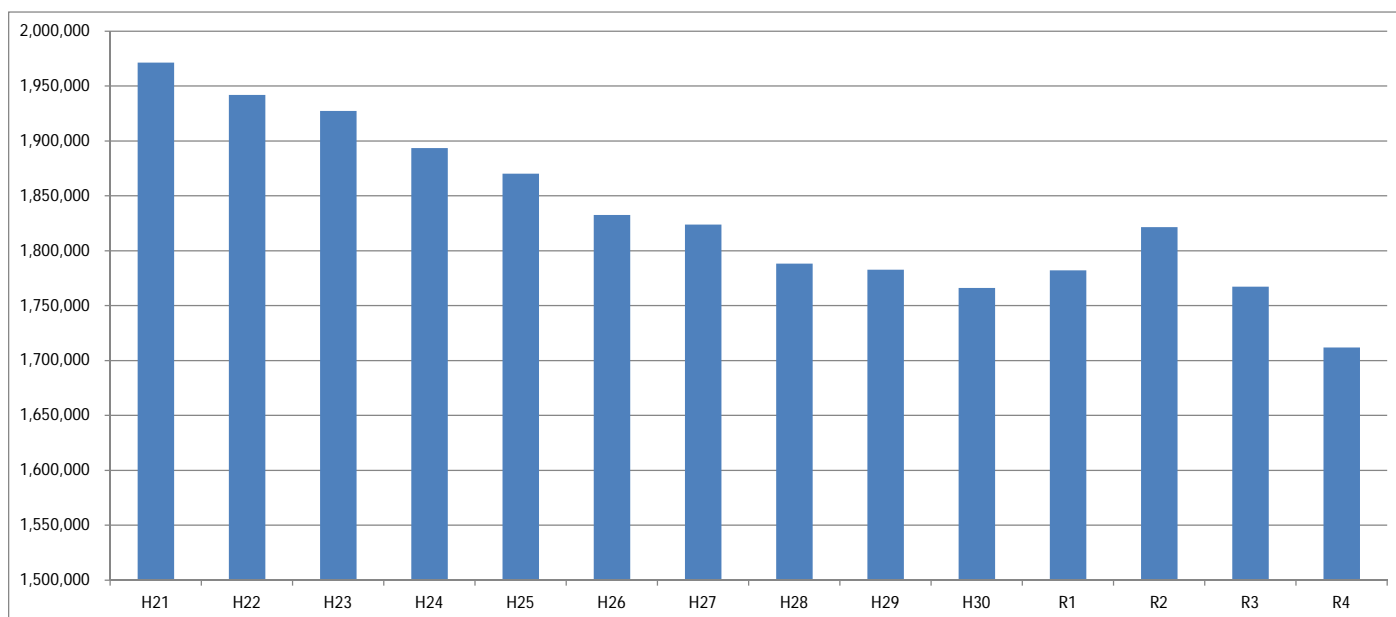
年度	H21	H22	H23	H24	H25	H26	H27	H28	H29	H30	R1	R2	R3	R4
量	142,182	140,992	140,605	136,811	134,917	132,586	131,596	128,391	128,129	127,157	129,202	133,307	128,638	123,025
前年度比	-	99.16%	99.73%	97.30%	98.62%	98.27%	99.25%	97.56%	99.80%	99.24%	101.61%	103.18%	96.50%	95.64%



23区における区収集ごみ量の推移(可燃・不燃・粗大)

(単位:トン)

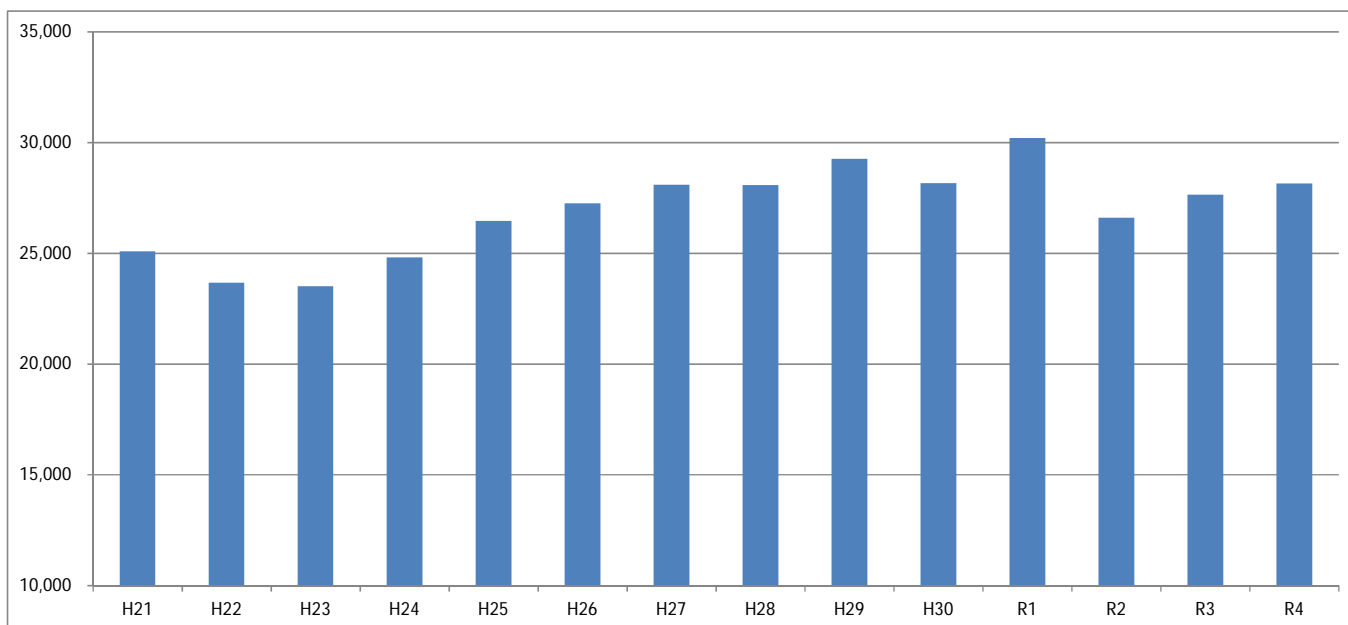
年度	H21	H22	H23	H24	H25	H26	H27	H28	H29	H30	R1	R2	R3	R4
量	1,971,257	1,941,924	1,927,220	1,893,490	1,870,022	1,832,492	1,823,783	1,788,208	1,782,644	1,766,177	1,782,161	1,821,459	1,767,310	1,711,764
前年度比	-	98.51%	99.24%	98.25%	98.76%	97.99%	99.52%	98.05%	99.69%	99.08%	100.91%	102.21%	97.03%	96.86%



練馬区における持込みごみ量の推移

(単位:トン)

年度	H21	H22	H23	H24	H25	H26	H27	H28	H29	H30	R1	R2	R3	R4
量	25,083	23,678	23,517	24,813	26,455	27,260	28,092	28,075	29,268	28,169	30,201	26,608	27,638	28,146
前年度比	-	94.40%	99.32%	105.51%	106.62%	103.04%	103.05%	99.94%	104.25%	96.25%	107.21%	88.10%	103.87%	101.84%



23区における持込みごみ量の推移

(単位:トン)

年度	H21	H22	H23	H24	H25	H26	H27	H28	H29	H30	R1	R2	R3	R4
量	975,998	934,511	914,215	937,049	946,787	950,826	960,201	966,085	982,924	988,118	984,155	738,354	766,169	828,392
前年度比	-	95.75%	97.83%	102.50%	101.04%	100.43%	100.99%	100.61%	101.74%	100.53%	99.60%	75.02%	103.77%	108.12%

