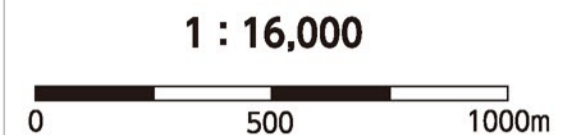
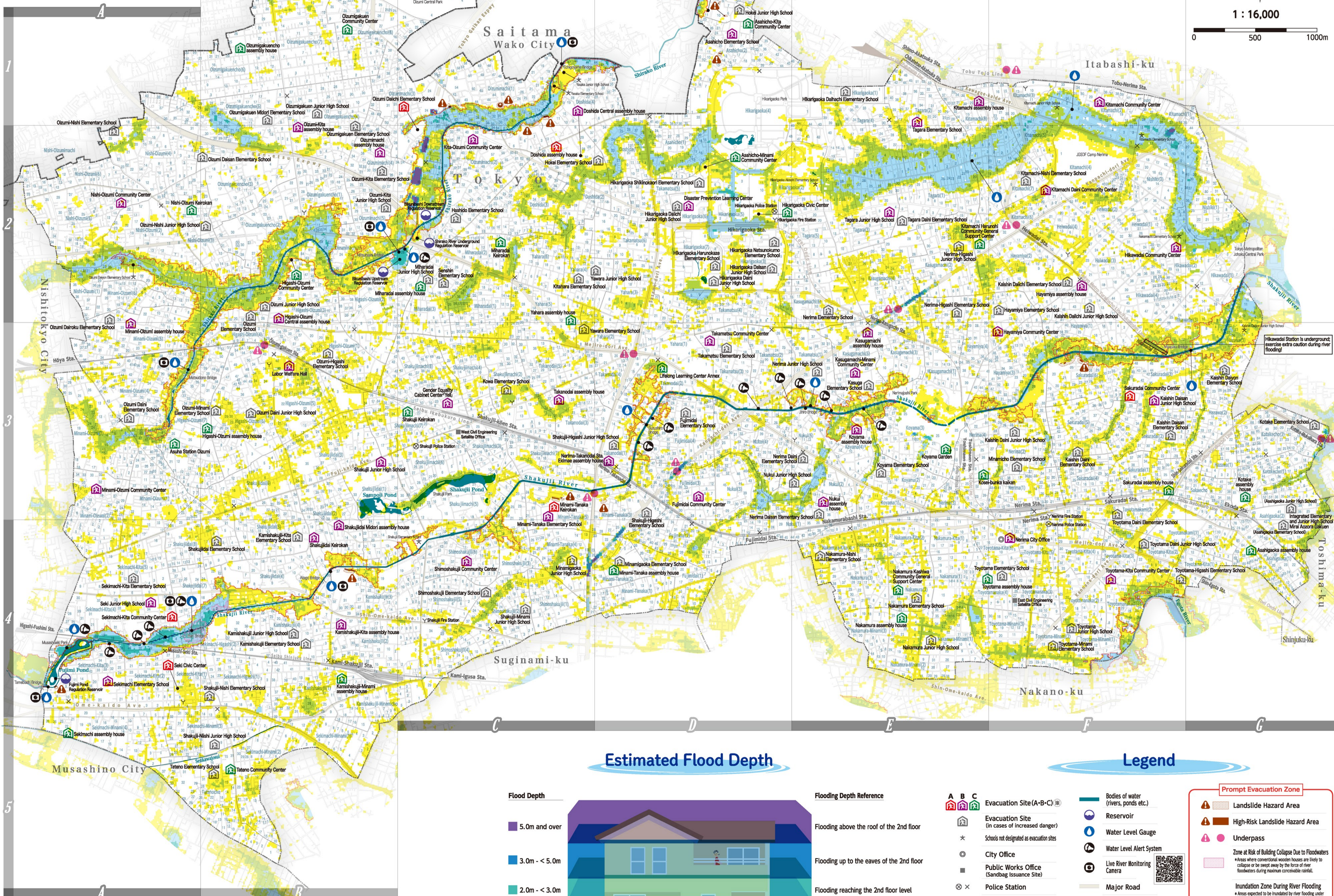


The city has designated the following facilities as evacuation shelters in cases of river flooding, inundation disasters, and landslides. Based on rainfall conditions and the risk of flooding, inundation, and landslides in each area, evacuation shelters will generally be opened in the priority order of A → B → C. If the risk of river flooding and inundation increases further, some municipal elementary and junior high schools may also be opened as evacuation shelters. In the event of an evacuation, please check the ward's website for the latest information on shelter openings, or contact the dedicated flood disaster call center at 03-5984-2569 or the Risk Management Department.

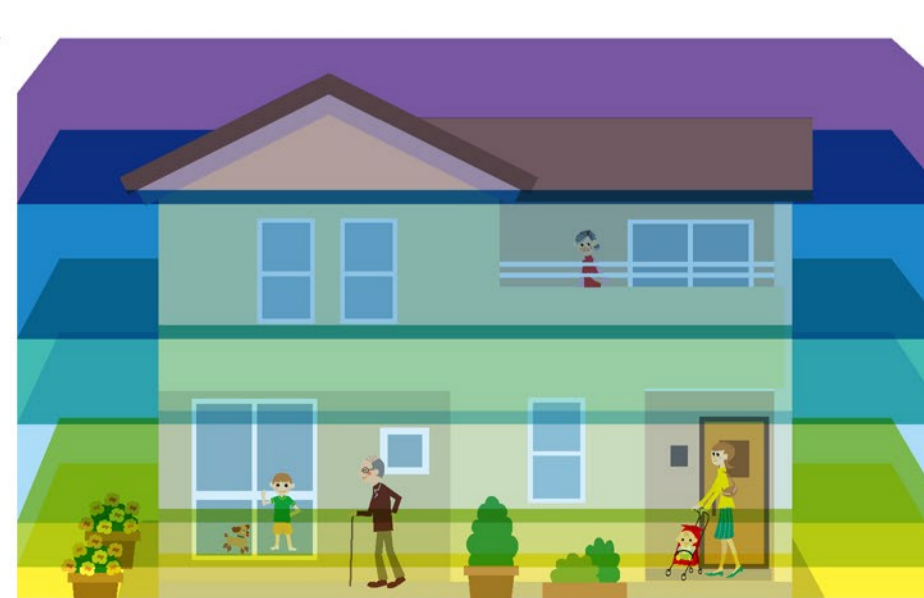
Rainfall is based on the maximum conceivable scale of rainfall (maximum hourly rainfall: 153 mm; total rainfall: 690 mm).



Estimated Flood Depth

Flood Depth

- 5.0m and over
- 3.0m - < 5.0m
- 2.0m - < 3.0m
- 1.0m - < 2.0m
- 0.5m - < 1.0m
- 0.1m - < 0.5m



Flooding Depth Reference

- Flooding above the roof of the 2nd floor
- Flooding up to the eaves of the 2nd floor
- Flooding reaching the 2nd floor level
- Flooding up to the eaves of the 1st floor
- Flooding above floor level (waist-high for an adult)
- Flooding below floor level (knee-high for an adult)

Legend

- A B C** Evacuation Site (A-B-C) ※
- Evacuation Site (in cases of increased danger)
- Schools not designated as evacuation sites
- City Office
- Public Works Office (Sandbag Issuance Site)
- Police Station
- Fire Station and Office
- Prefectural Boundary
- City Boundary
- Town Boundary
- Bodies of water (rivers, ponds, etc.)
- Reservoir
- Water Level Gauge
- Water Level Alert System
- Live River Monitoring Camera
- Major Road
- Railway
- Subway
- Prompt Evacuation Zone**
- Landslide Hazard Area
- High-Risk Landslide Hazard Area
- Underpass
- Zone at Risk of Building Collapse Due to Floodwaters
 - Areas where conventional wooden houses are likely to collapse or be swept away by the force of river floodwaters during maximum conceivable rainfall.
 - Areas where the estimated flood depth is 2m or greater.
 - Require evacuation to higher ground. If evacuation to such areas is not possible, only evacuation from the area is necessary.
 - Areas outside this zone are at risk of inundation from rippled flooding.
- Inundation Zone During River Flooding
 - Areas expected to be inundated by river flooding under maximum conceivable rainfall.
 - Areas where the estimated flood depth is 2m or greater.
 - Require evacuation to higher ground. If evacuation to such areas is not possible, only evacuation from the area is necessary.
 - Areas outside this zone are at risk of inundation from rippled flooding.

※ Evacuation shelters open in the priority order of A → B → C (see table on the right). If rainfall intensifies and the risks of river flooding and subsequent inundation increase, some ward-operated elementary and junior high schools may be designated as evacuation shelters.

Priority Order	Evacuation Site	Address	Telephone number	Coordinate
A	Sakuradai Community Center	3-39-17 Sakuradai	3993-5461	F-3
	Asahicho assembly house	3-11-6 Asahicho	3939-8960	D-1
	Doshida assembly house	2-40-21 Doshida	3978-8190	C-2
	Minami-Tanaka Keirokan	5-15-25 Minami-Tanaka	3995-5538	C-3
	Ozumi Daiichi Elementary School	3-16-23 Ozumimachi	3925-2455	C-2
	Seki Civic Center	1-7-2 Sekimachi-Kita	3928-1987	A-4
	Sekimachi-Kita Community Center	4-12-21 Sekimachi-Kita	3594-2603	A-4
	Toyotama-Kita Community Center	3-7-9 Toyotama-Kita	3948-3061	F-4
	Nerima City Office	6-12-1 Toyotama-Kita	3993-1111	F-4
	Kaishin Daisan Junior High School	3-28-1 Sakuradai	3993-4265	F-3
B	Koyama assembly house	4-21-12 Koyama	3999-9696	E-3
	Nukui assembly house	1-9-1 Nukui	3926-7217	E-3
	Hikawadai Community Center	2-16-14 Hikawadai	3932-3656	F-2
	Hayamiya assembly house	1-44-19 Hayamiya	3994-6977	F-2
	Hayamiya Community Center	4-14-5 Hayamiya	3994-7961	F-3
	Kasugamachi-Minami Community Center	5-20-25 Kasugamachi	3926-4971	E-3
	Kasugamachi assembly house	5-30-1 Kasugamachi	3990-4680	E-3
	Takamatsu Community Center	3-24-27 Takamatsu	3999-7911	D-3
	Kitamachi Community Center	2-26-1 Kitamachi	3937-1931	F-1
	Kitamachi Daini Community Center	6-24-101 Kitamachi	3931-1270	F-2
C	Kitamachi assembly house	8-28-10 Kitamachi	3550-7719	E-1
	Tagara Elementary School	2-19-19 Tagara	3939-0351	E-1
	Tagara Junior High School	3-3-1 Tagara	3990-4403	E-2
	Disaster Prevention Learning Center	6-4-1 Hikarigaoka	5997-6471	D-2
	Asahicho Elementary School	2-29-1 Asahicho	3939-0362	D-1
	Doshida Central assembly house	2-32-8 Doshida	3924-1990	C-2
	Fujimidai Community Center	3-10-1 Fujimidai	3926-1091	D-2
	Minami-Tanaka Elementary School	5-15-37 Minami-Tanaka	3997-1145	C-3
	Nerima-Takanodai Sta. Ekimae assembly house	1-7-29 Takanodai	3995-2457	D-3
	Takanodai assembly house	3-28-11 Takanodai	5372-1277	C-3
Gender Equality Cabinet Center*Yell	8-1-10 Shakujimachi	3996-9005	C-3	
D	Shakujiji Junior High School	1-32-1 Shakujidai	3997-3131	B-3
	Shakujidai Midori assembly house	2-13-6 Shakujidai	5393-5200	B-4
	Shakujidai Keirokan	2-18-13 Shakujidai	3995-8270	B-4
	Kamishakujiji-Kita assembly house	2-36-18 Kamishakujiji	5991-3600	B-4
	Shimoshakujiji Community Center	6-8-15 Shimoshakujiji	3904-5061	C-4
	Higashi-Ozumi Central assembly house	3-18-9 Higashi-Ozumi	3922-1260	B-2
	Labor Welfare Hall	5-40-36 Higashi-Ozumi	3923-5511	B-3
	Nishi-Ozumi Community Center	5-3-32 Nishi-Ozumi	3921-6493	A-2
	Minami-Ozumi Community Center	2-19-26 Minami-Ozumi	3978-9791	A-3
	Minami-Ozumi assembly house	5-26-19 Minami-Ozumi	3922-1130	A-3
E	Ozumi-Kita assembly house	4-21-1 Ozumigakuencho	3922-0191	B-2
	Kita-Ozumi Community Center	2-41-26 Ozumimachi	3978-0324	C-2
	Ozumimachi assembly house	4-35-17 Ozumimachi	5387-5490	B-2
	Sekimachi Elementary School	3-23-34 Sekimachi-Kita	3929-1290	A-4
	Seki Junior High School	4-34-23 Sekimachi-Kita	3929-0048	A-4
	Asahigaoka assembly house	1-58-10 Asahigaoka	3950-4842	G-4
	Kotake assembly house	1-63-2 Kotakecho	3554-3100	G-3
	Nakamura Kazuhisa Community General Support Center	2-25-3 Nakamura	5848-6177	E-4
	Nakamura assembly house	2-23-12 Nakamura-Minami	3999-9560	E-4
	Sakuradai assembly house	1-22-9 Sakuradai	3993-6699	F-3
F	Kosei-bunka kaikan	4-2-3 Nerima	3991-3080	E-3
	Koyama Garden	3-1-21 Koyama	3926-7810	E-3
	Toyotama assembly house	4-13-6 Toyotamanka	3991-7857	E-4
	Asahicho-Minami Community Center	5-23-15 Takamatsu	3904-5191	D-2
	Kitamachi Haruhiko Community General Support Center	6-35-7 Kitamachi	5399-5347	E-2
	Hikarigaoka Civic Center	2-9-6 Hikarigaoka	5997-7712	D-2
	Asahicho-Kita Community Center	2-30-16 Asahicho	5998-0511	D-1
	Minami-Tanaka assembly house	2-18-36 Minami-Tanaka	3997-5700	D-4
	Lifelong Learning Center Annex	2-25-1 Takanodai	3904-4881	D-3
	Yahara assembly house	5-6-7 Yahara	3997-5673	C-2
G	Miharadai Keirokan	2-11-29 Miharadai	3924-8834	C-2
	Miharadai assembly house	3-13-17 Miharadai	3925-4790	C-2
	Shakujiji Keirokan	7-28-21 Shakujimachi	3996-2900	C-3
	Kamishakujiji-Minami assembly house	1-6-16 Kamishakujiji	3920-0620	B-4
	Higashi-Ozumi Community Center	3-5-1 Higashi-Ozumi	3921-8296	B-2
	Asuha Station Ozumi	7-20-1 Higashi-Ozumi	6904-4035	A-3
	Higashi-Ozumi assembly house	7-27-51 Higashi-Ozumi	3923-3037	B-3
	Nishi-Ozumi Keirokan	3-21-16 Nishi-Ozumi	3924-9545	A-2
	Ozumigakuencho assembly house	6-20-36 Ozumigakuencho	5387-6315	B-1
	Ozumigakuen Community Center	8-9-5 Ozumigakuencho	3922-4101	B-1
Sekimachi assembly house	4-22-1 Sekimachi-Minami	5991-0555	A-5	
Tateno Community Center	15-42 Tatenochi	3928-6216	B-5	