

Nerima City

Flood Hazard Map

Edited and published
June 2026 Risk Management Office, Risk Management Dept., Nerima City
Tel: 03-5984-2762

Flood Evacuation Sites

Check your nearest evacuation site and route in advance.

Evacuation Site	
Name of facilities	
Address	
Telephone	

1. What is the Nerima City Flood Hazard Map?

This hazard map, created following the Flood Control Act, shows flood risks in Nerima Ward, including river flooding (external inundation) and inland flooding (internal inundation), based on forecasts* by the Tokyo Metropolitan Government. It is based on the maximum hourly rainfall of 153 mm and the total rainfall of 690 mm. Areas at risk of flooding due to rivers within the ward—Shakujii River, Shirako River, and Egota River—are outlined in red to indicate external inundation. Other risk areas outside

the red outline signify inland flooding (internal inundation). Please note that during heavy rainfall, actual flooding may not occur exactly as shown on the map. Areas not designated as flood-prone should still exercise caution regarding possible inundation.

*Forecasts by the Tokyo Metropolitan Government
"Kanda River Basin Inundation Forecast Map (March 2018)"
"Shakujii River and Shirako River Basin Inundation Forecast Map (May 2019)"
"Sumida River and Shingashi River Basin Inundation Forecast Map (March 2021)"

5. Collect Information

When a typhoon approaches, the city typically announces, two days in advance, details about which evacuation shelters will be open, which city services will be suspended, and which public facilities will close. A dedicated call center for water-related disasters will also be set up the day before.

A Call center for water-related disasters
☎ 03-5984-2569

Make sure to check in advance how to obtain emergency information.

All Residents of the City

- TV (including data broadcast)
- Radio
- City's official website
- City's severe weather information
- City's official X, LINE
- Nerima Information Newsletter
- Website of the Japan Meteorological Agency
- Emergency Alert Email
- Yahoo Disaster News Flash
- Tokyo Metropolitan Water Disaster Comprehensive Information System, Live River Monitoring Camera, Etc.
- Disaster Administration Network
- Water level alarms
- City vehicles equipped with public address systems
- Police cars
- Fire trucks

2. Know About Flood Emergencies!

What is river flooding?

Flooding caused by overflow or the collapse of embankments is called river flooding (external flooding). The size of the river basin differs between small rivers commonly seen in residential areas and larger rivers with open riverbanks, so the scale of damage and the time it takes for flooding to occur also vary. Even rain that falls upstream can raise the water level, so caution is necessary.

What is inland flooding?

Flooding caused by sudden heavy rain that exceeds the drainage capacity of sewers and other systems, resulting in submerged roads, is known as inland flooding (internal flooding). Water may flow into basements from the streets, or manhole covers may be forced open, so it is critical to move to higher floors and avoid walking on flooded roads.

Small Rivers Commonly Seen in the City (e.g., Shakujii River)

1 Clear weather



The river flows gently, with the riverbed visible.

2 Start of rain



The water soon becomes murky, the riverbed is obscured, and the current picks up speed.

3 Heavy rainfall



Water accumulates in the river, causing the water level to rise rapidly to ground level.

4 Water overflows from the river



The river overflows, causing homes along the banks to be inundated.

3. New Disaster Prevention Weather Information (Effective from May 2026)

To help residents in more easily identifying the correct evacuation steps, the names of disaster prevention weather information issued by the Japan Meteorological Agency during heavy rain, typhoons, and other potential disasters have been simplified for better understanding.

Main Changes

"Alert Level" will be added to the information.

Information previously issued as "Equivalent to Alert Level 4" will now be announced as a "Danger Warning."

The alert levels for evacuation actions are now easier to understand, providing clearer guidance for evacuation decisions.

[Examples of changes] (Old) "Heavy Rain Warning" → (New) "Level 3 Warning (Heavy Rain)"

Disaster Prevention Weather Information	Flood				Heavy Rain				Landslide			
	Equivalent to Alert Level 5	Level 6 Emergency Warning (Flood)	Level 5 Emergency Warning (Flood)	Level 4 Urgent Warning (Flood)	Level 5 Emergency Warning (Heavy rain)	Level 4 Urgent Warning (Heavy rain)	Level 3 Warning (Heavy rain)	Level 2 Advisory (Heavy rain)	Level 5 Emergency Warning (Landslide)	Level 4 Urgent Warning (Landslide)	Level 3 Warning (Landslide)	Level 2 Advisory (Landslide)
Alert Level 1	Early Warning Information											

Timeline of Disaster Progression: Several days to 1 day before, Half a day to several hours before, Several hours to 3 hours before, 2 hours to 1 hour before.

Water level observation stations

The Tokyo Metropolitan Government and Nerima City have installed water level observation stations along rivers to monitor the water level from the top of the riverbank to the water surface. For flood control reservoirs, the water level is measured from the ground surface to the water surface. These readings can be checked through the "Nerima City Disaster and Weather Information" system.

Rivers	Names of observation stations	Water level	
		Warning 1 (Warning Level)	Warning 2 (Danger Level)
Shakujii River	Tamebuchi Bridge	-100cm	-50cm
	Fujimi Pond	-80cm	-30cm
	Inari Bridge	-100cm	-50cm
	Atago Bridge	-100cm	-50cm
	Suzushiro Bridge	-100cm	-50cm
Shirako River	Jinro Bridge	-100cm	-50cm
	Miyajuku Bridge	-100cm	-50cm
	Matsudono Bridge	-100cm	-50cm
Shirako River	Mitsuhashi Bridge	-207cm	-50cm
	The Upstream Bikuni Bridge Reservoir	-	50cm
	Echigoyama Bridge	-100cm	-50cm
Shirako River	Koyasu Bridge	-100cm	-50cm

Water level alarms

Nerima City has installed water level alarms to alert nearby residents when river levels rise and there is a risk of flooding.

In the case of Fujimi Pond and Inari Bridge

Water Level Warning Alert

5sec Announcement, 20sec Alert signal, 5sec Announcement

You may hear "tadaima, shakujii-gawa no mizu ga fueteorimasu node, gochuu-kudasai" (ついでに、しゃくじい川の水がふえておるますのぞ、ごちゅうくさい)

Danger Water Level Warning

5sec Announcement, 5sec Alert signal, 5sec Announcement

You may hear "tadaima, shakujii-gawa ga afururu osore ga hasseni shimashita" (ついでに、しゃくじい川があふるるおそろえがはっせんししました)

Water level warning stations

Sekimachi (Water Level Gauge: Fujimi Pond, Inari Bridge) (Location: Shakujii River, Sekimachi)
When any of the water level gauges reach the preset level, announcements are made. At the same time, an automatic notification is sent to the Nerima City Office and the Sekimachi Branch of the Shakujii Fire Station.

Suzushiro Bridge (Water Level Gauge: Suzushiro Bridge) (Location: Shakujii River, Fujimida and Takarashi)
When the preset level is reached, announcements are made, and the Nerima City Office is automatically notified.

Jinro Bridge (Water Level Gauge: Jinro Bridge) (Location: Shirako River, Koyama and Takamasa)
When the preset level is reached, announcements are made, and the Nerima City Office is automatically notified.

The Upstream Bikuni Bridge Reservoir (Water Level Gauge: Mitsuhashi Bridge, The Upstream Bikuni Bridge Reservoir) (Location: Shirako River, Bikuni Bridge)
When the Mitsuhashi water level gauge reaches the preset level, announcements are made, and the Nerima City Office is automatically notified.

6. Be Fully Prepared for Flood Emergencies!

Decide How to Act in Case of Disaster

To prepare for flooding, organize in advance when, who, and what to do according to your family structure and living environment. This will allow you to take safe and calm evacuation actions in the event of an emergency. Make use of the "Tokyo My Timeline" created by the Tokyo Metropolitan Government.

Evacuation Guidelines

- Gather accurate information and evacuate early**
Stay updated on disaster and weather news via TV, radio, and other sources. If in danger, evacuate early to safety. Check evacuation shelters on the city's website and confirm your nearest shelter and routes beforehand.
- Start evacuation promptly**
Evacuate immediately once the city issues evacuation information. If going to a shelter is dangerous, evacuate to a nearby safe place or move to a safer room within your building.
- Wear comfortable clothing and evacuate in pairs or groups**
Pack your belongings in a backpack to keep your hands free. Wear athletic shoes with laces instead of rubber boots. Always evacuate with two or more people and call out to neighbors as you go.
- Assist those who need help**
Please help evacuate those who may have difficulty, such as the elderly, people with disabilities, those who are ill, or those with injuries.
- Avoid dangerous areas**
When evacuating, avoid hazardous locations such as riversides, underpasses beneath railways or roads, if you must pass through a flooded area, use an umbrella or a stick to check for safety.

Emergency Preparedness Kit

Essential Items to Take

- Drinking water
- Food supplies (including emergency rations)
- Valuable goods
- Underwear and clothing
- Mobile phones for portable phones and smartphones
- Regular medicine
- Infection prevention supplies (Masks, Antiseptic solution, Thermometer)
- Other essential personal items

Register for the Nerima Information Newsletter

Register for the Nerima Information Newsletter to receive weather updates and evacuation alerts.

Register here

We ask for your cooperation on a daily basis

- Keep storm drains clear.
- Do not place objects on or near storm drains or gutters.
- Prepare sandbags and flood barriers for underground facilities.

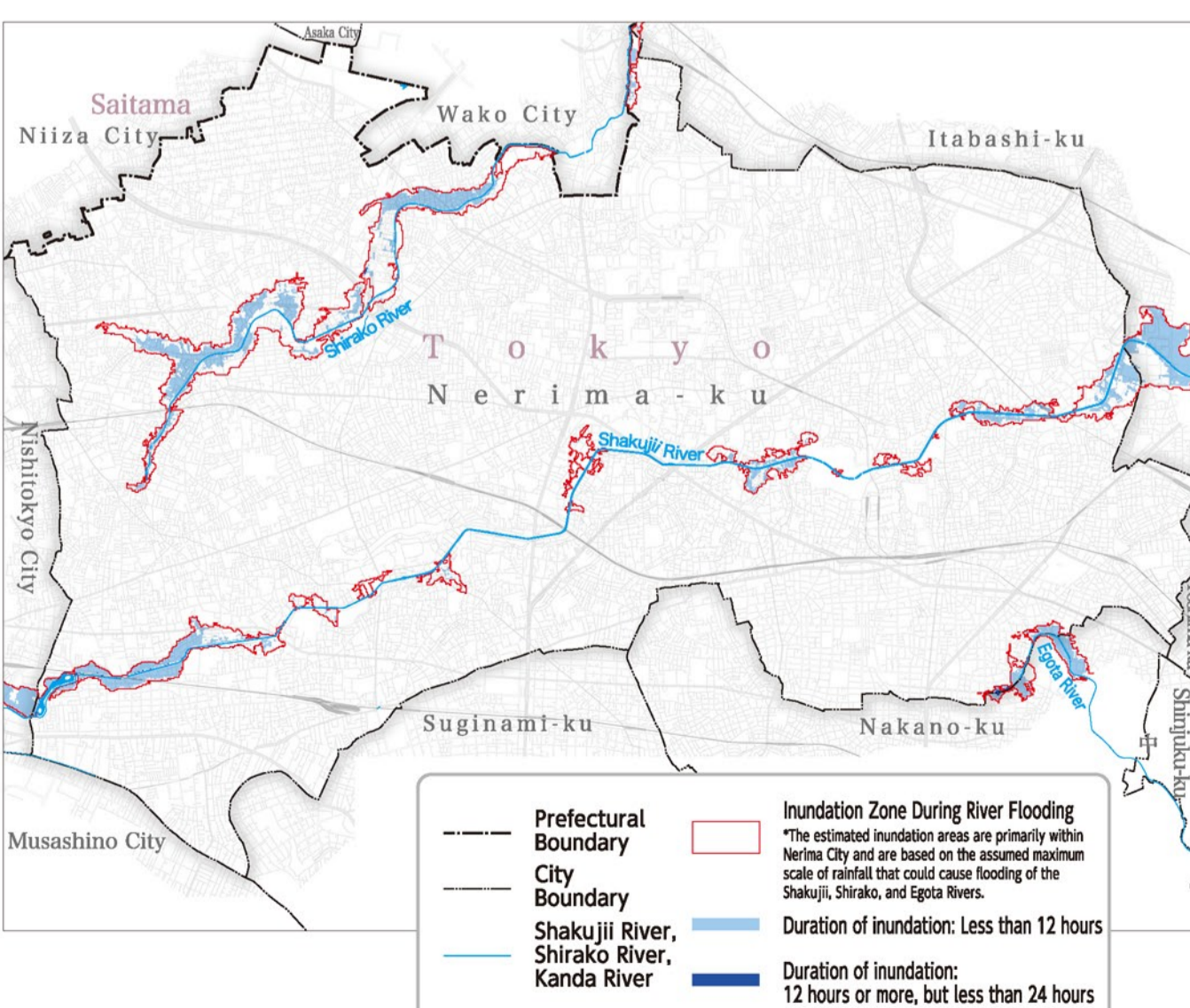
Sandbags will be distributed

To help prevent residential flooding during heavy rain, sandbags are distributed to those who request them.

Organization name	Telephone number	Designated area
East Civil Engineering Satellite Office	3994-0083	Areas with postal codes 176 and 179
West Civil Engineering Satellite Office	3995-0083	Areas with postal codes 177 and 178

Estimated Duration of Inundation (Depth of 50 cm or more) in the Event of Flooding of the Shakujii, Shirako, and Egota Rivers

This map illustrates the estimated duration of inundation with a water depth of 50 cm or more, in the event that the Shakujii River, Shirako River, and Egota River overflow due to the maximum assumed rainfall (maximum hourly rainfall of 153 mm, total rainfall of 690 mm).



4. Disaster Prevention Information and Alert Levels

When the risk of flooding increases, the city will issue evacuation information for specific areas based on disaster weather updates announced by the Japan Meteorological Agency and the Tokyo Metropolitan Government.

The main priority of evacuation is to avoid danger. Evacuation does not only mean going to an evacuation shelter; it can also involve going to the home of a relative or friend in a safe area or staying at home if that is considered safe. It is important to decide in advance how you will act in such situations.

Alert level	Action to take	Evacuation information issued by the city	Severe weather information issued by the city as reference
Alert level 5 Ensure your safety immediately, as your life may be in danger.	Emergency Safety Measures	Emergency Safety Measures	Heavy Rain Emergency Warning, Flood Emergency Warning, Landslide Emergency Warning
Alert level 4 Everyone evacuate from dangerous areas.	Evacuation Instruction	Evacuation Instruction	Heavy Rain Urgent Warning, Flood Urgent Warning, Landslide Urgent Warning
Alert level 3 Elderly people and others evacuate from dangerous areas.	Evacuation of the Elderly, Etc.	Evacuation of the Elderly, Etc.	Heavy Rain Warning, Landslide Warning
Alert level 2	Refer to the hazard map and other resources to review your evacuation plan.		Heavy Rain Advisory, Landslide Advisory
Alert level 1	Mentally prepare yourself for a possible disaster.		Early Warning Information

* If you are thinking about evacuating to a shelter, please check the city's website for its operational status beforehand.

Evacuation Planning and Drills for Facilities Assisting Individuals with Special Needs

Since June 2017, the Flood Control Act mandates that facilities in flood-prone areas along designated rivers, which assist individuals with special needs*, must develop an evacuation plan and carry out evacuation drills to facilitate smooth evacuations during floods.

All rivers within the ward (Shakujii River, Shirako River, and Egota River) are designated rivers, and any such facilities located in their flood risk zones are subject to this requirement.

*Facilities assisting individuals with special needs
These are facilities used by people who may need assistance during evacuation, such as the elderly, people with disabilities, and infants.

Various Flood Control Measures

[Flood Control Reservoirs]

These facilities temporarily store water from rivers during heavy rainfall to regulate water flow and lower river levels, thereby preventing flooding. In the Shirako River basin, the following reservoirs are in place: the upstream Bikuni Bridge Reservoir, the Shirako River Underground Reservoir, and the downstream Bikuni Bridge Reservoir. In the Shakujii River basin, there is the Fujimi Pond Reservoir. Currently, two additional reservoirs are under development: the Kan-nana Loop Underground Wide-area Reservoir and the Johoku Chuo Park Reservoir.

[Sewer System Facilities]

In fiscal year 2012, a large-scale storage pipe was installed in the Toyotama and Nakamura areas. In fiscal year 2021, the Second Tagaragawa Trunk Line was completed in the Tagara area.



List of disaster-related organizations

Organization name	Address	Telephone number
Nerima City Office	6-12-1 Toyotama-Kita	3993-1111
Nerima City Office (Night-time and weekends/holidays)	3-28-8 Toyotamanaka	3993-1101 (Night-time and weekends/holidays)
East Civil Engineering Satellite Office	3-28-8 Toyotamanaka	3994-0083
West Civil Engineering Satellite Office	3-30-26 Shakujimachi	3995-0083
Nerima Police Station	5-2-7 Toyotama-Kita	3994-0110
Hikarigaoka Police Station	2-9-8 Hikarigaoka	5998-0110
Shakujii Police Station	6-17-26 Shakujimachi	3904-0110
Nerima Fire Station	5-1-8 Toyotama-Kita	3994-0119
Hikarigaoka Fire Station	2-9-1 Hikarigaoka	5997-0119
Shakujii Fire Station	5-16-8 Shimoshakujii	3995-0119
TEPCO Power Grid Customer Center		0120-995-007
Tokyo Gas Customer Center		0570-00-2211
Nerima Branch, Tokyo Metropolitan Government Bureau of Waterworks	1-9-4 Nakamura-Kita	5987-5330
Nerima Branch Office, Western Second Tagaragawa Office, Tokyo Metropolitan Government Bureau of Sewerage	4-15-1 Toyotama-Kita	5999-5650
Tokyo Branch, Japanese Red Cross Society	1-2-15 Okubo, Shinjuku-ku	5273-6741