

Nerima
City

Flood Hazard Map

Edited and published
July 2025 Risk Management Office, Risk Management Dept., Nerima City
Tel: 03-5984-1327

Flood Evacuation Sites

Check your nearest evacuation site and route in advance.

Evacuation Site	
Name of facilities	
Address	
Telephone	

1. What is the Nerima City Flood Hazard Map?

This hazard map, produced using forecasts from the Tokyo Metropolitan Government*, outlines the risks of river flooding (external inundation) and inland flooding (internal inundation) for Nerima City. It is based on the maximum possible hourly rainfall of 153 mm and a cumulative rainfall of 690 mm. Areas at risk of flooding due to rivers within the ward—Shakujii River, Shirako River, and Egota River—are outlined in red to indicate external inundation. Other risk areas outside

the red outline signify inland flooding (internal inundation). Please note that during heavy rainfall, actual flooding may not occur exactly as shown on the map. Areas not designated as flood-prone should still exercise caution regarding possible inundation.

*Forecasts by the Tokyo Metropolitan Government
"Kanda River Basin Inundation Forecast Map (March 2018)"
"Shakujii River and Shirako River Basin Inundation Forecast Map (May 2019)"
"Sumida River and Shingashi River Basin Inundation Forecast Map (March 2021)"

2. Know About Flood Emergencies!

What is river flooding?

Flooding caused by overflow or the collapse of embankments is called river flooding (external flooding). The size of the river basin differs between small rivers commonly seen in residential areas and larger rivers with open riverbanks, so the scale of damage and the time it takes for flooding to occur also vary. Even rain that falls upstream can raise the water level, so caution is necessary.

What is inland flooding?

Flooding caused by sudden heavy rain that exceeds the drainage capacity of sewers and other systems, resulting in submerged roads, is known as inland flooding (internal flooding). Water may flow into basements from the streets, or manhole covers may be forced open, so it is critical to move to higher floors and avoid walking on flooded roads.

Small Rivers Commonly Seen in the City (e.g., Shakujii River)



The river flows gently, with the riverbed visible.



The water soon becomes murky, the riverbed is obscured, and the current picks up speed.



Water accumulates in the river, causing the water level to rise rapidly to ground level.



The river overflows, causing homes along the banks to be inundated.

3. Severe Weather Information

Emergency Weather Warnings-Warnings-Advisories

Advisories-Warnings-Emergency warnings		Issuance criteria
Heavy rain emergency warning		Issued when heavy rainfall of an intensity observed only once every few decades is forecast due to typhoon or torrential rain, or when a powerful typhoon with a level of intensity observed only once every few decades or an extratropical cyclone of comparable intensity is forecast to bring heavy rain.
Warnings	Heavy rain warning	Issued when there is the risk of heavy rain causing serious landslide disasters or flooding.
	Flood warning	Issued when there is the risk of rising levels or flooding of rivers, causing serious flood disasters.
Advisories	Heavy rain advisory	Issued when there is the risk of landslide disasters and flood disasters occurring from heavy rain.
	Flood advisory	Issued when there is the risk of rising levels or flooding of rivers, causing flood disasters.

Landslide disaster alert information

This additional alert is issued when the risk of a landslide disaster further increases after a heavy rain warning (for landslides) has been announced. In Nerima City, 15 locations have been designated as landslide disaster warning areas.

The city has also prepared a separate Landslide Hazard Map, which is available at the Crisis Management Division (7th floor of the main government building), the Disaster Preparedness Learning Center, all community offices (except the Nerima Office), and the Public Information Plaza.

Flood hazard information

This is issued when there is a risk of river flooding due to heavy rain.

Water level observation stations

The Tokyo Metropolitan Government and Nerima City have installed water level observation stations along rivers to monitor the water level from the top of the riverbank to the water surface. For flood control reservoirs, the water level is measured from the ground surface to the water surface. These readings can be checked through the "Nerima City Disaster and Weather Information" system.

Rivers	Names of observation stations	Water level	
		Warning1 (Warning Level)	Warning2 (Danger Level)
Shakujii River	Tamebuchi Bridge	-100cm	-50cm
	Fujimi Pond	-80cm	-30cm
	Inari Bridge	-100cm	-50cm
	Atago Bridge	-100cm	-50cm
	Suzushiro Bridge	-100cm	-50cm
	Jinro Bridge	-100cm	-50cm
Shirako River	Myajuku Bridge	-100cm	-50cm
	Matsudono Bridge	-100cm	-50cm
	Mitsuhashi Bridge	-158cm	-50cm
	The Upstream Bikuni Bridge Reservoir	—	50cm
	Echigoyama Bridge	-100cm	-50cm
	Koyasu Bridge	-100cm	-50cm

Water level alarms

Nerima City has installed water level alarms to alert nearby residents when river levels rise and there is a risk of flooding.

In the case of Fujimi Pond and Inari Bridge	Water level warning stations	Overview
Water Level Warning Alert 5sec 20sec 5sec Announcement 20sec 20sec 20sec Alert signal You may hear "tadama, shakui-gawa no mizu ga fueteorimasu node, gochuu-kudasai" (twice) Danger Water Level Warning 5sec 5sec 5sec Alert signal You may hear "tadama, shakui-gawa ga afururu osore ga hassei shimasai" (twice)	Sekimachi (Water Level Gauge: Fujimi Pond, Inari Bridge) (Location: Shakujii River, Sekimachi) Suzushiro Bridge (Water Level Gauge: Suzushiro Bridge) (Location: Shakujii River, Fujimisa and Takanoai) Jinro Bridge (Water Level Gauge: Jinro Bridge) (Location: Shakujii River, Koyama and Takanoai) The Upstream Bikuni Bridge Reservoir (Water Level Gauge: Mitsuhashi Bridge: The Upstream Bikuni Bridge Reservoir) (Location: Shirako River, Bikuni Bridge)	When any of the water level gauges reach the preset level, announcements are made. At the same time, an automatic notification is sent to the Nerima City Office and the Sekimachi Branch of the Shakujii Fire Station. When the preset level is reached, announcements are made, and the Nerima City Office is automatically notified. When the preset level is reached, announcements are made, and the Nerima City Office is automatically notified. When the Mitsubashi water level gauge reaches the preset level, announcements are made, and the Nerima City Office is automatically notified.

4. Disaster Prevention Information and Alert Levels

When the risk of flooding increases, the city will issue evacuation information **for specific areas** based on disaster weather updates announced by the Japan Meteorological Agency and the Tokyo Metropolitan Government.

The main priority of evacuation is to avoid danger. Evacuation does not only mean going to an evacuation shelter; it can also involve going to the home of a relative or friend in a safe area or staying at home if that is considered safe. It is important to decide in advance how you will act in such situations.

Disaster Prevention Information			
Alert level	Action to take	Evacuation information issued by the city	Severe weather information used by the city as reference
Alert level 5	Ensure your safety immediately, as your life may be in danger.	Emergency Safety Measures * It will be issued to the possible extent when the city finds that a disaster is actually occurring.	Heavy Rain Emergency Warning, Etc.
Alert level 4	If you find yourself in a dangerous area, evacuate immediately to a safe location. If reaching a public evacuation shelter is too dangerous, go to a nearby safe spot or a more secure area in your home.	Evacuation Instruction	Information on potential flood hazards, Landslide Alert Information, Etc.
Alert level 3	People in dangerous areas, such as the elderly, individuals with disabilities, or infants, who require more time to evacuate, along with their caregivers, should evacuate immediately. Others should start preparing for evacuation.	Evacuation of the Elderly, Etc.	Heavy Rain Warning, Flood Warning, Etc.
Alert level 2	Refer to the hazard map and other resources to review your evacuation plan.	—	Heavy Rain Advisory, Flood Advisory, Etc.
Alert level 1	Mentally prepare yourself for a possible disaster.	—	Early Warning Information

*避難所に避難を検討される場合は、必ず開設状況を区ホームページなどでご確認ください。

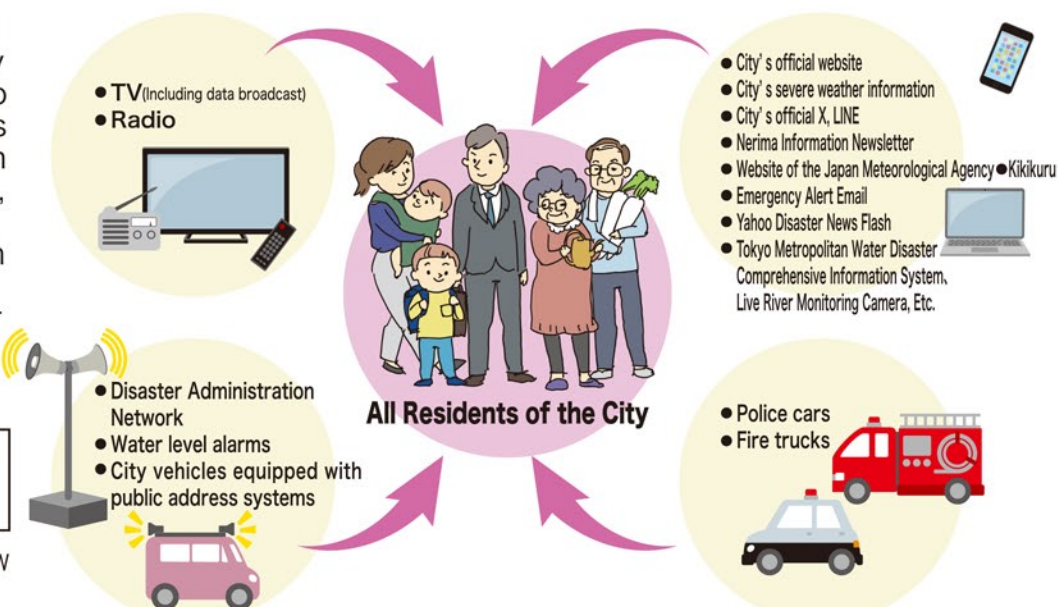
5. Collect Information

When a typhoon approaches, the city typically announces, two days in advance, details about which evacuation shelters will be open, which city services will be suspended, and which public facilities will close. A dedicated call center for water-related disasters will also be set up the day before.

A Call center for water-related disasters

03-5984-2569

Make sure to check in advance how to obtain emergency information.



6. Be Fully Prepared for Flood Emergencies!

Decide How to Act in Case of Disaster

To prepare for flooding, organize in advance when, who, and what to do according to your family structure and living environment. This will allow you to take safe and calm evacuation actions in the event of an emergency. Make use of the "Tokyo My Timeline" created by the Tokyo Metropolitan Government.



Evacuation Guidelines

Gather accurate information and evacuate early
Stay updated on disaster and weather news via TV, radio, and other sources. If in danger, evacuate early to safety. Check evacuation shelters on the city's website and confirm your nearest shelter and routes beforehand.

Start evacuation promptly
Evacuate immediately once the city issues evacuation information. Please register in advance. Evacuate to a nearby safe place or move to a safer room within your building.

Wear comfortable clothing and evacuate in pairs or groups
Pack your belongings in a backpack to keep your hands free. Wear athletic shoes with laces instead of rubber boots. Always evacuate with two or more people and call out to neighbors as you go.

Assist those who need help
Please help evacuate those who may have difficulty, such as the elderly, people with disabilities, those who are ill, or those with injuries.

Avoid dangerous areas
When evacuating, avoid hazardous locations such as riversides, underpasses beneath railways or roads. If you must pass through a flooded area, use an umbrella or a stick to check for safety.

Emergency Preparedness Kit

Essential Items to Take

- Drinking water
- Food supplies (including emergency rations)
- Valuable goods
- Underwear and clothing
- Mobile batteries for portable phones and smartphones
- Regular medicine

Infection prevention supplies

- Masks
- Antiseptic solution
- Thermometer

Other essential personal items

Register for the Nerima Information Newsletter

Register for the Nerima Information Newsletter to receive weather updates and evacuation alerts.



We ask for your cooperation on a daily basis

Keep storm drains clear.



Do not place objects on or near storm drains or gutters.

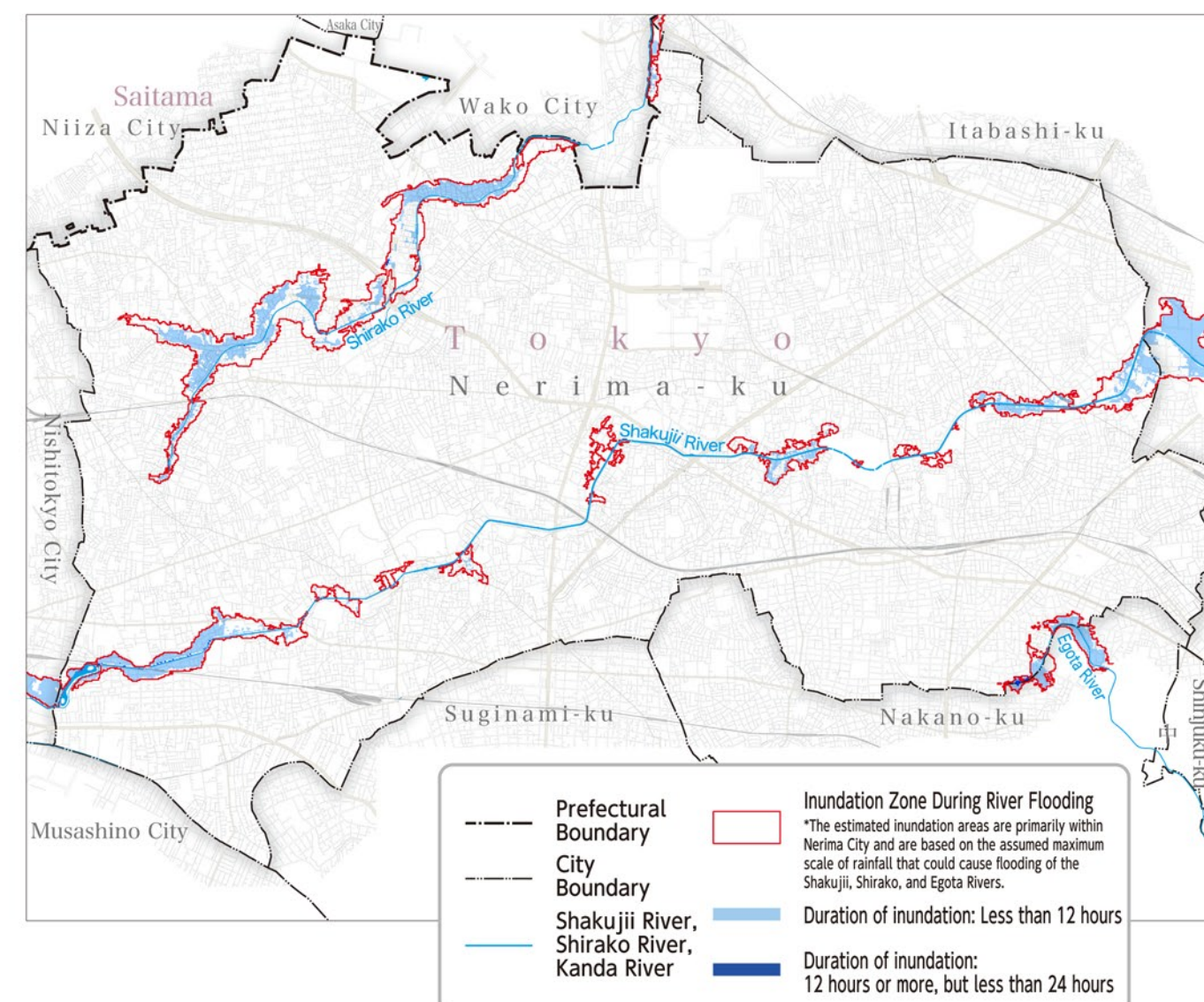


Prepare sandbags and flood barriers for underground facilities.



Estimated Duration of Inundation (Depth of 50 cm or more) in the Event of Flooding of the Shakujii, Shirako, and Egota Rivers

This map illustrates the estimated duration of inundation with a water depth of 50 cm or more, in the event that the Shakujii River, Shirako River, and Egota River overflow due to the maximum assumed rainfall (maximum hourly rainfall of 153 mm, total rainfall of 690 mm).



Evacuation Planning and Drills for Facilities Assisting Individuals with Special Needs

Since June 2017, the Flood Control Act mandates that facilities in flood-prone areas along designated rivers, which assist individuals with special needs*, must develop an evacuation plan and carry out evacuation drills to facilitate smooth evacuations during floods.

All rivers within the ward (Shakujii River, Shirako River, and Egota River) are designated rivers, and any such facilities located in their flood risk zones are subject to this requirement.

*Facilities assisting individuals with special needs
These are facilities used by people who may need assistance during evacuation, such as the elderly, people with disabilities, and infants.

For more details here



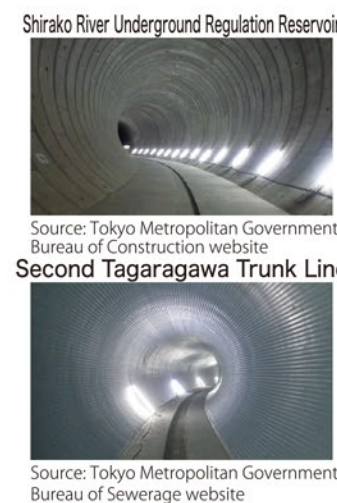
Various Flood Control Measures

[Flood Control Reservoirs]

These facilities temporarily store water from rivers during heavy rainfall to regulate water flow and lower river levels, thereby preventing flooding. In the Shirako River basin, the following reservoirs are in place: the upstream Bikuni Bridge Reservoir, the Shirako River Underground Reservoir, and the downstream Bikuni Bridge Reservoir. In the Shakujii River basin, there is the Fujimi Pond Reservoir. Currently, two additional reservoirs are under development: the Kan-nana Loop Underground Wide-area Reservoir and the Johoku Chuo Park Reservoir.

[Sewer System Facilities]

In fiscal year 2012, a large-scale storage pipe was installed in the Toyotama and Nakamura areas. In fiscal year 2021, the Second Tagaragawa Trunk Line was completed in the Tagara area.



List of disaster-related organizations

Organization name	Address	Telephone number
Nerima City Office	6-12-1 Toyotama-Kita	3993-1111
Nerima City Office (Night-time and weekends/holidays)		3993-1101 (Night-time and weekends/holidays)
East Civil Engineering Satellite Office	3-28-8 Toyotamanaka	3994-0083
West Civil Engineering Satellite Office	3-30-26 Shakujimachi	3995-0083
Nerima Police Station	5-2-7 Toyotama-Kita	3994-0110
Hikarigaoka Police Station	2-9-8 Hikarigaoka	5998-0110
Shakujii Police Station	6-17-26 Shakujimachi	3904-0110
Nerima Fire Station	5-1-8 Toyotama-Kita	3994-0119
Hikarigaoka Fire Station	2-9-1 Hikarigaoka	5997-0119
Shakujii Fire Station	5-16-8 Shimoshakujii	3995-0119
TEPCO Power Grid Customer Center		0120-995-007
Tokyo Gas Customer Center		0570-00-2211
Nerima Branch, Tokyo Metropolitan Government Bureau of Waterworks	1-9-4 Nakamura-Kita	5987-5330
Nerima Branch Office, Western Second Sewerage Office, Tokyo Metropolitan Government Bureau of Sewerage	4-15-1 Toyotama-Kita	5999-5650
Tokyo Branch, Japanese Red Cross Society	1-2-15 Okubo, Shinjuku-ku	5273-6741