

Continuous Productive Urban Landscapes (CPULs) and the CPUL City. Urban Agriculture Belts, Networks & Sites in London & Nerima City

Breakout Session 3:
Strategies and Policies for cities in coexistence with urban agriculture

World Urban Agriculture Summit 2019 – Nerima City Tokyo
Saturday 30th November 2019



Prof Andre Viljoen
University of Brighton and Bohn & Viljoen Architects

Urban Agriculture Belts, Networks & Sites in London & Nerima City

Contents:

London

A Planning Advisory Note

Nerima

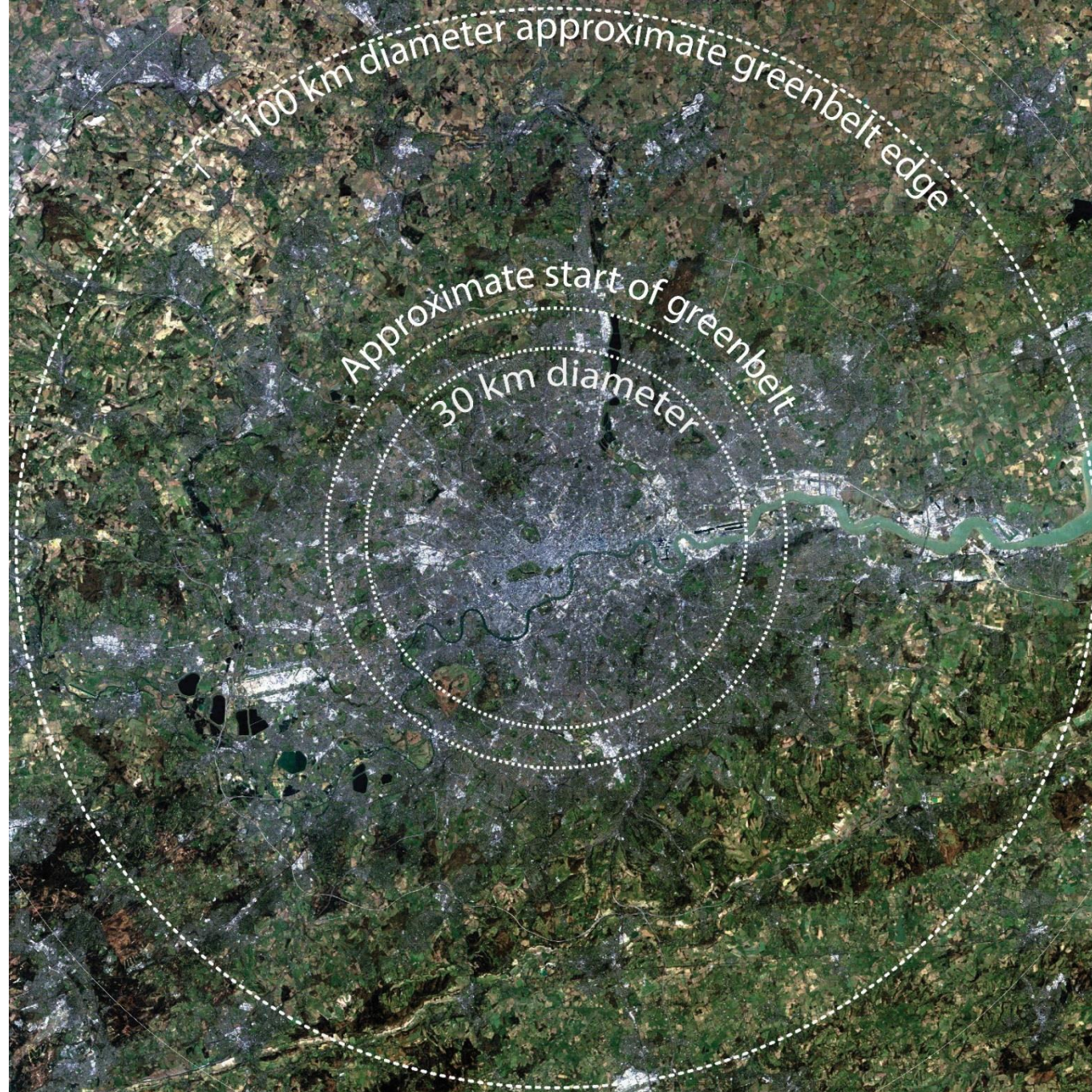


Image: European Space Agency website November 2019

Policy
Green Belt Act 1938
National Planning Policy
Framework for England 2019
The London Plan 2016 & 2020

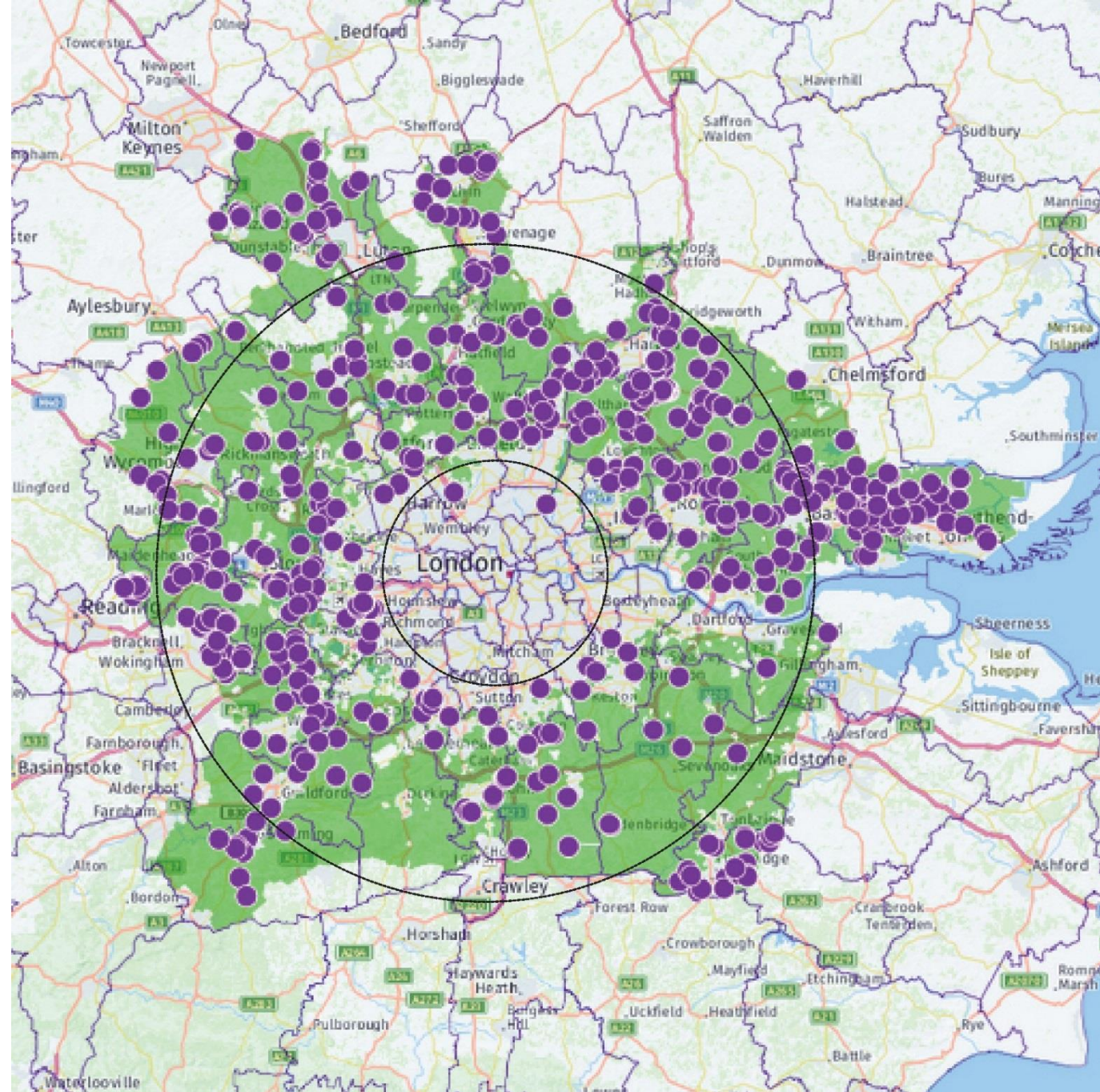
MAYOR OF LONDON



THE LONDON PLAN

THE SPATIAL DEVELOPMENT STRATEGY FOR LONDON
CONSOLIDATED WITH ALTERATIONS SINCE 2011

MARCH 2016



London's Green Belt
showing
"threatened development"
The London Green Belt Council.
2019.



Image: European Space Agency website November 2019

Policy
Green Belt Act 1938
National Planning Policy
Framework for England 2019
The London Plan 2016 & 2020

MAYOR OF LONDON



THE LONDON PLAN

THE SPATIAL DEVELOPMENT STRATEGY FOR LONDON
CONSOLIDATED WITH ALTERATIONS SINCE 2011

MARCH 2016

The place to find and volunteer for community gardens in London.

Click on a pin on the map to show gardens in that area, or use the option above to find Big Dig gardens near you.

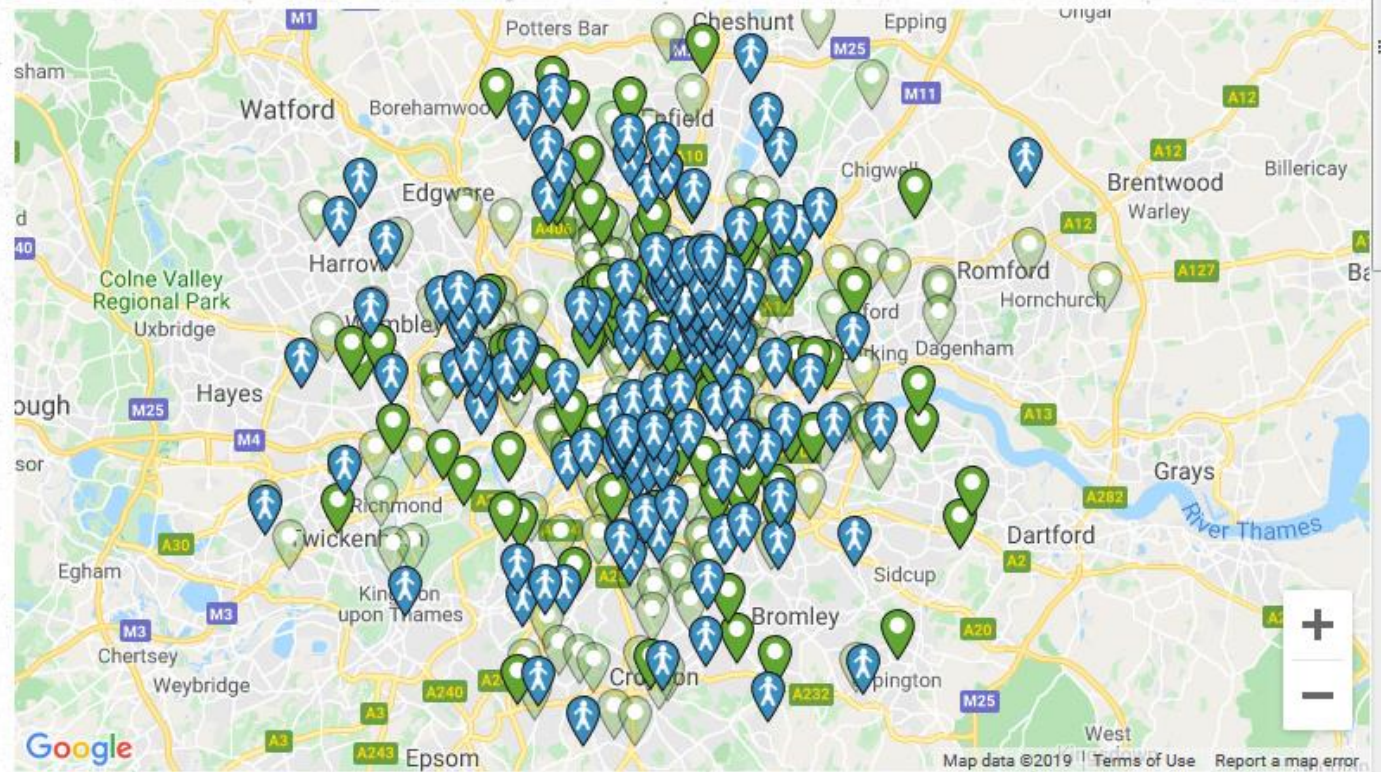
Key

- Big Dig Gardens
- Inactive Gardens
- Gardens looking for volunteers

The Big Dig London partner is Capital Growth

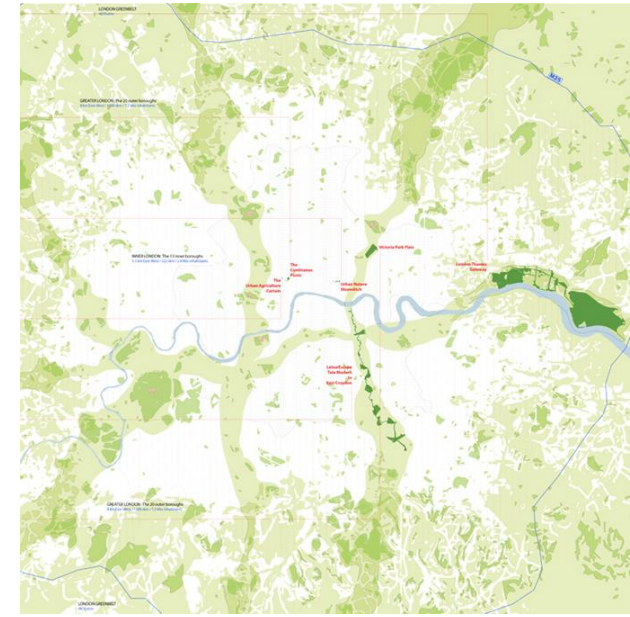
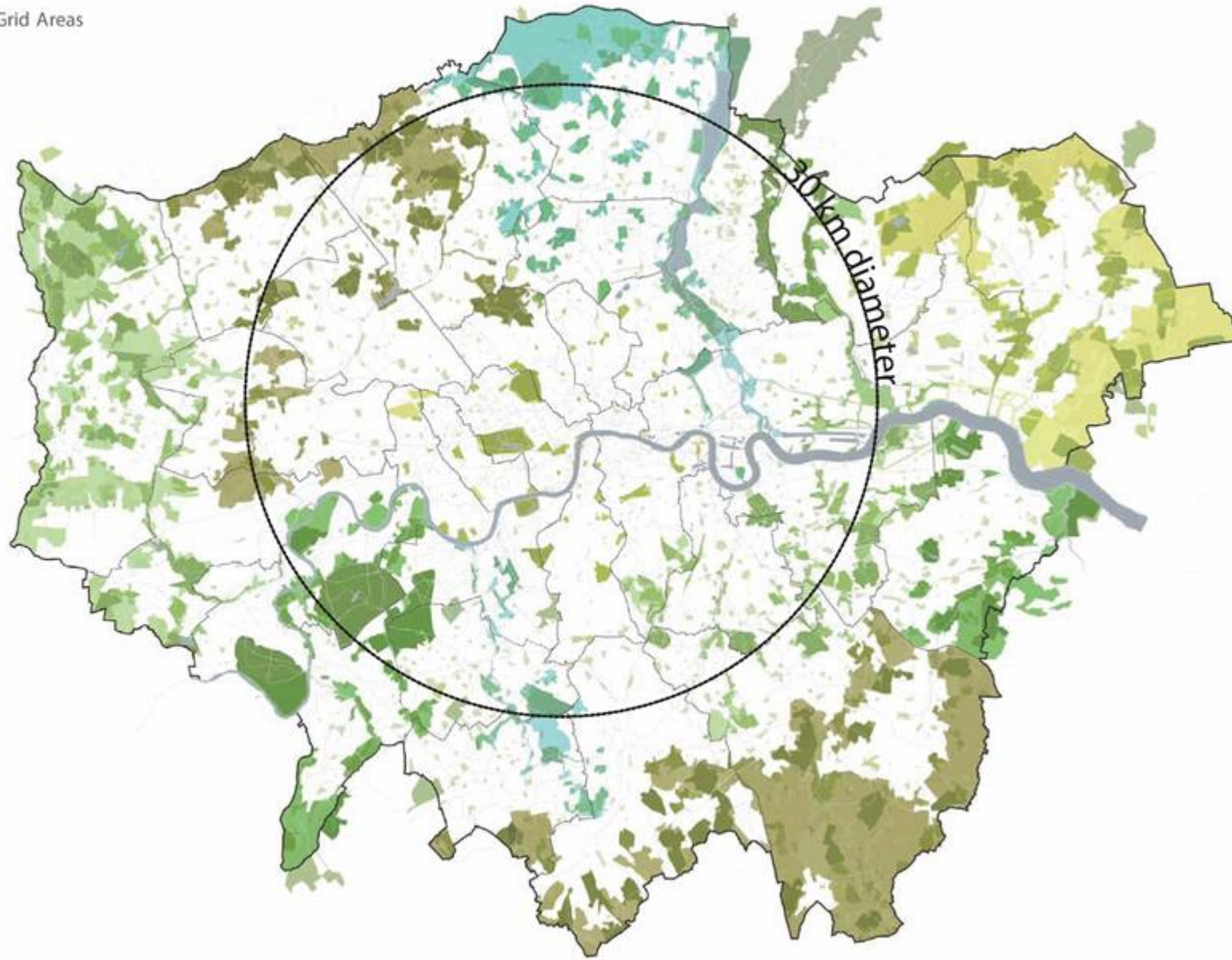


VISIT WEBSITE



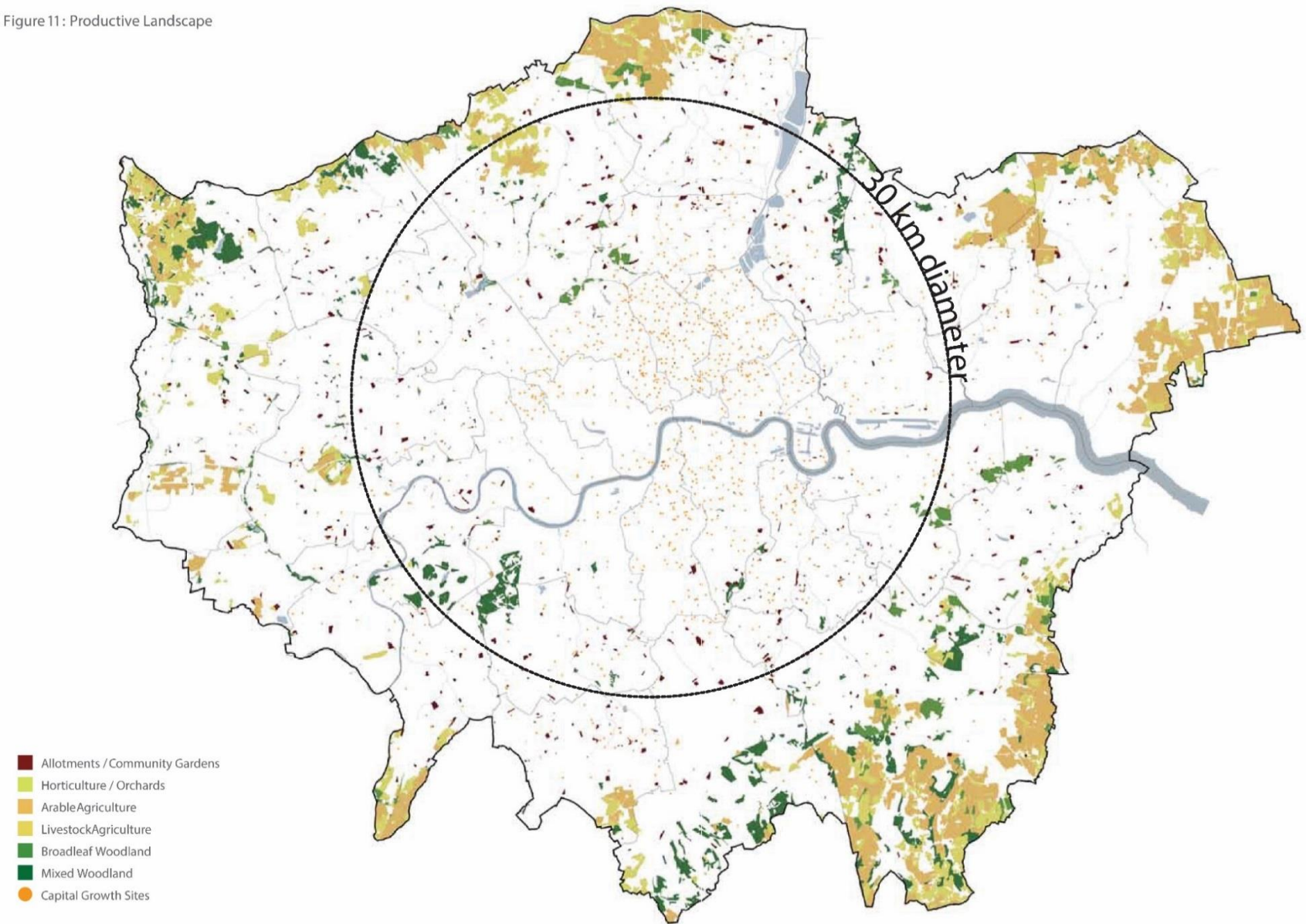
Supplementary planning guidance 2012, *Green Infrastructure and open environments: The All London Green Grid*. Referred to in the “London Plans” 2016 and 2020.

The Green Grid Areas

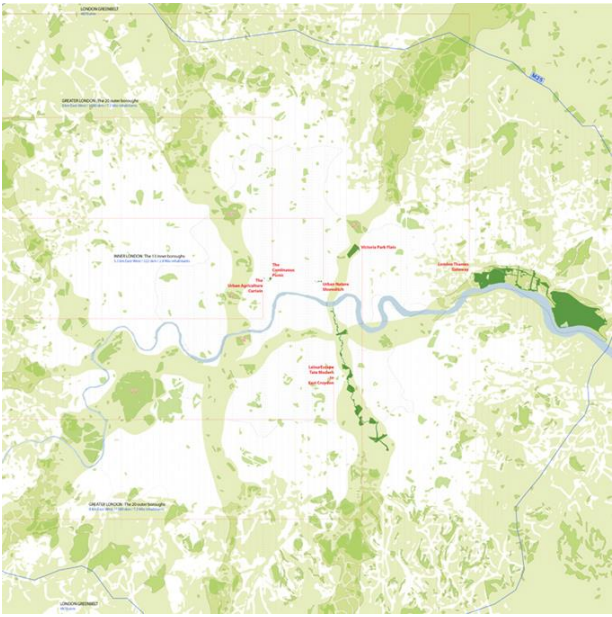


Supplementary planning guidance 2012, *Green Infrastructure and open environments: The All London Green Grid*. Referred to in the “London Plans” 2016 and 2020.

Figure 11: Productive Landscape



Map derived from GIG data – © Crown Copyright and database right 2011. Ordnance Survey 100032216



London



Continuous Productive Urban Landscape [CPUL]

[C] connects open space :
parcels of inner-urban open land,
inner-urban land to a new
infrastructure,
inner-urban land to the rural land

[P] uses open space :
through placing Urban Agriculture
environmentally,
economically and
socially productive

[U] happens 'inside' :
the greenbelt stays green,
greenfield sites stay green,
brownfield sites become green

[L] is landscape :
with spatial and visual qualities
of the rural and the urban



A Planning Advisory Note

PAN 06

Food Growing and Development

September 2011

Brighton & Hove City Council's Local Development Framework

Planning Advice Note

Contents

Introduction	4
Section One: Policy Framework	6
National Policy	6
Local Planning Policy	7
Section Two: Technical and Design Issues	13
Planning Considerations	13
Technical and practical considerations	13
Design Options	15
Management of Growing Spaces	17
Appendix 1: Examples of potential approaches	18
Appendix 2: Case Studies	19
Appendix 3: Resources	23



Appendix 1: Examples of Potential Approaches in Particular Settings



Brighton and
Hove 2019

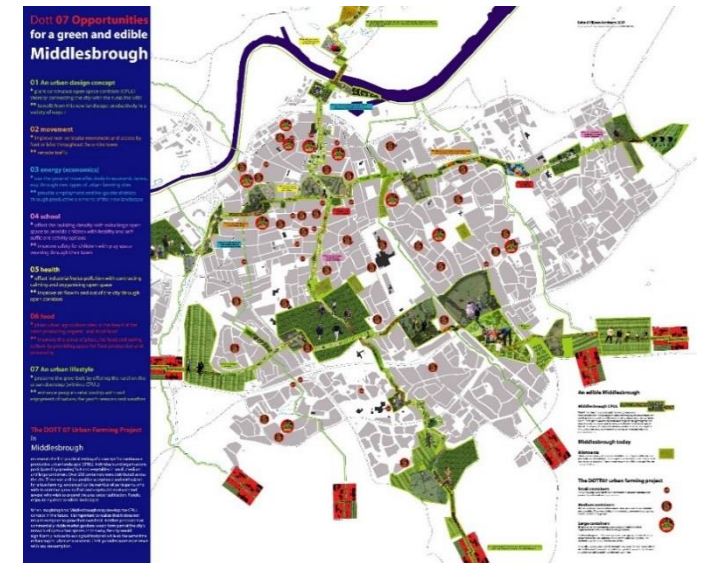


Kai Penny's images from Brighton and Hove (2019), results of PAN 06 compared to designs by Bohn & Viljoen taking account of the integration of individual plots into wider spatial and social networks.



Left: *Spiel/Feld Marzahn* - Berlin
– K- Bohn as Chair of City &
Nutrition, TU Berlin – 2009/2012
– photo by Bohn&Viljoen – 2012

Right: *The Urban Farming Project*
– Middlesbrough –
Bohn&Viljoen Architects (
consultants) – 2006/2007



Nerima

To Add.

A Nerima Case Study: Mr. Shiraishi's farm.

The integration of urban agriculture sites into a CPUL, using Mr. Shiraishi's 4,000 square meters farm as a case study.

二軒新田児童遊園地



航空写真図

和光市総合福祉会館

新リンパ療法
センター練馬北大泉

光和Corp.

レストハウス和光

クリーニング竹本商店

栗本建設工業

中里郷土の森緑地

ゼクオス機材センター

フラワー・プロ
スライム薬局

白石農園

練馬区立 中里緑地



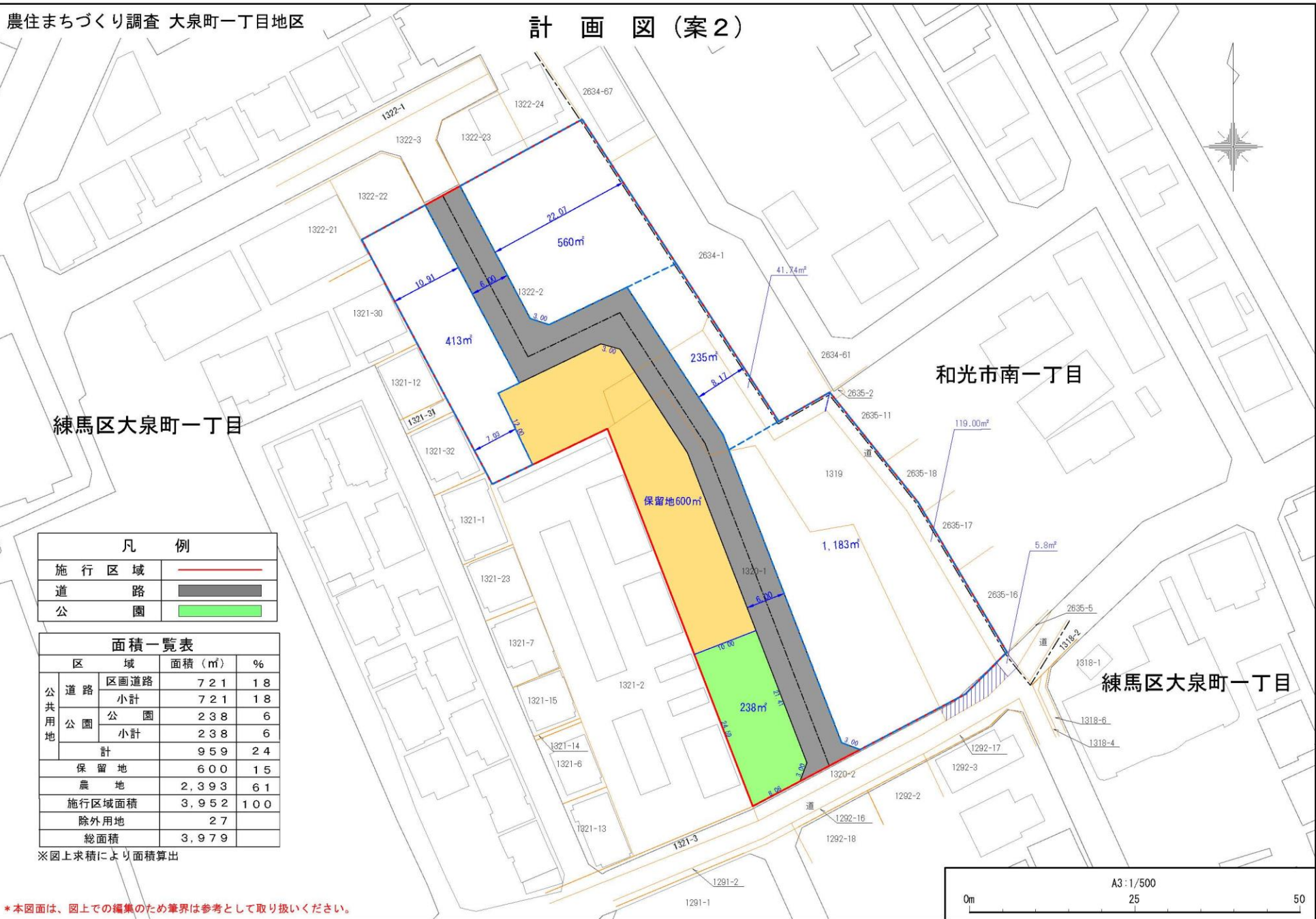


現況公図重ね図 縮尺1:500



* 本図面は、図上での編集のため筆界は参考として取り扱ってください。





現況公図重ね図 縮尺1:500



image: Bohn&Viljoen – 2019

0m 25 50
1:500

* 本図面は、図上での編集のため筆界は参考として取り扱ってください。

現況公図重ね図 縮尺1:500



image: Bohn&Viljoen – 2019

0m 25 50
1:500

* 本図面は、図上での編集のため筆界は参考として取り扱ってください。

縮尺 1 : 500



和光市南一丁目

練馬区大泉町一丁目

image: Bohn&Viljoen – 2019

*本図面は、図上での編集のため筆界は参考として取り扱ってください。



現況公図重ね図 縮尺1:500



image: Bohn&Viljoen – 2019

0m 25 50
1:500

* 本図面は、図上での編集のため筆界は参考として取り扱ってください。

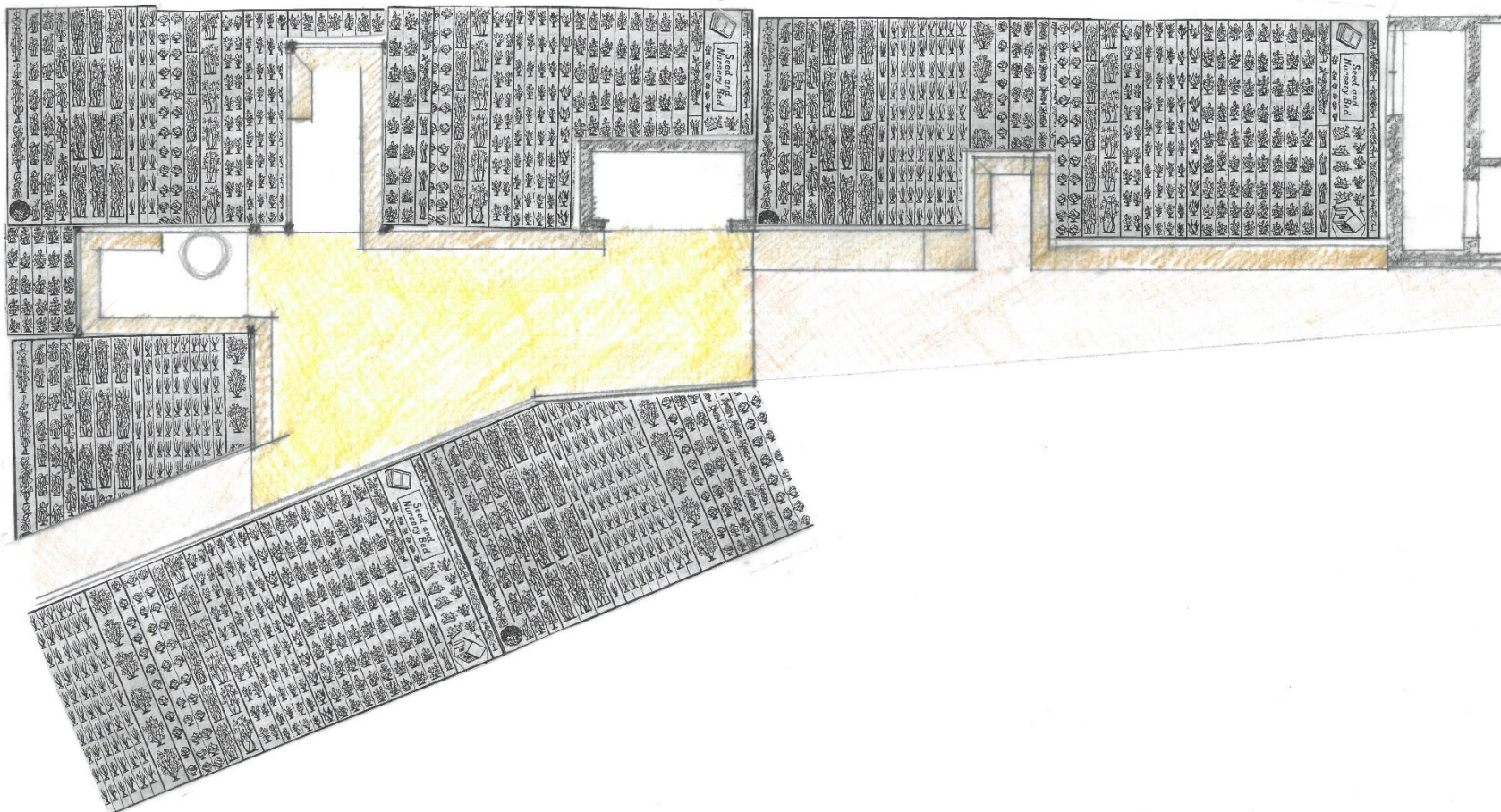


image: Bohn&Viljoen – 2019

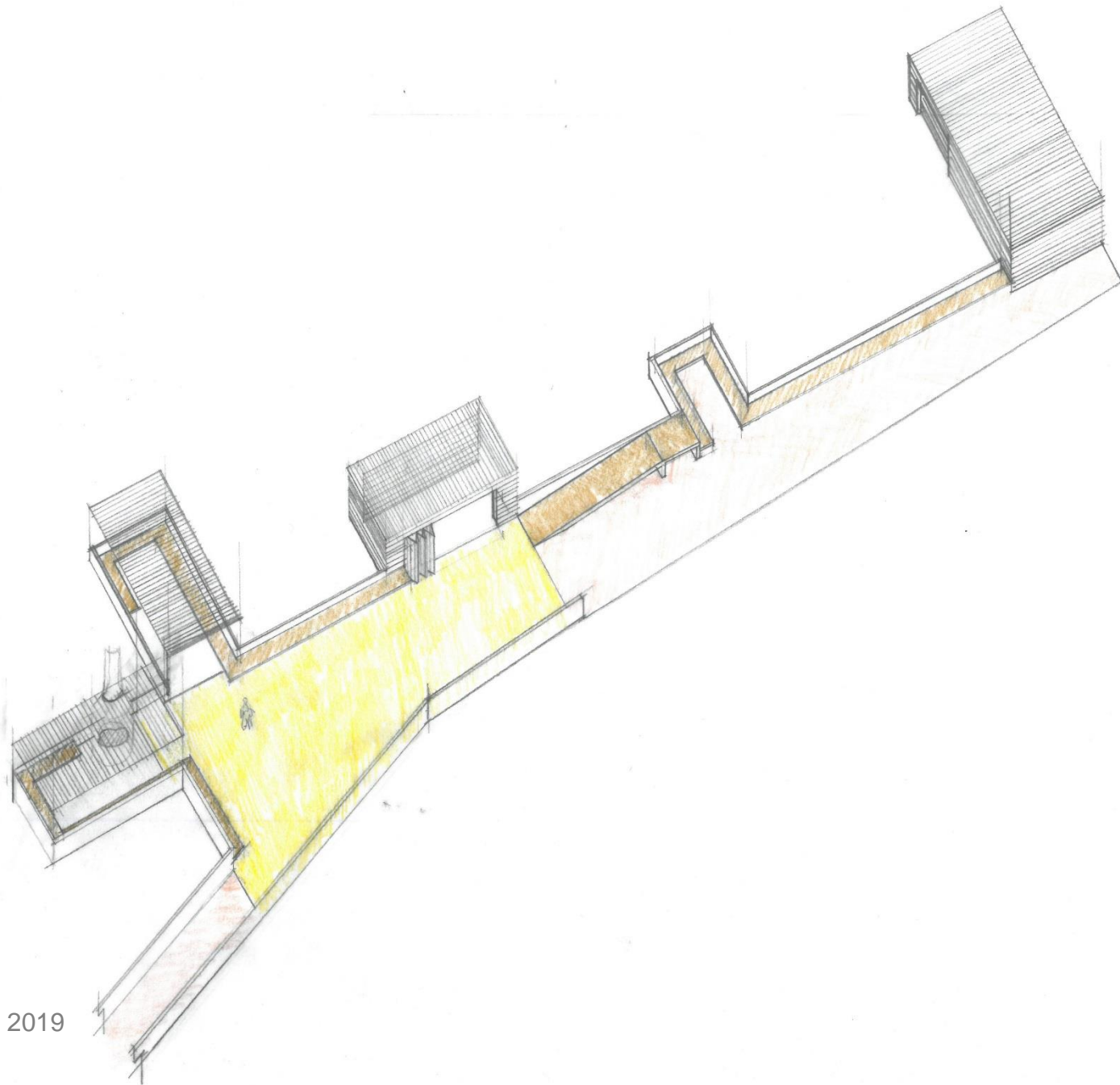


image: Bohn&Viljoen – 2019

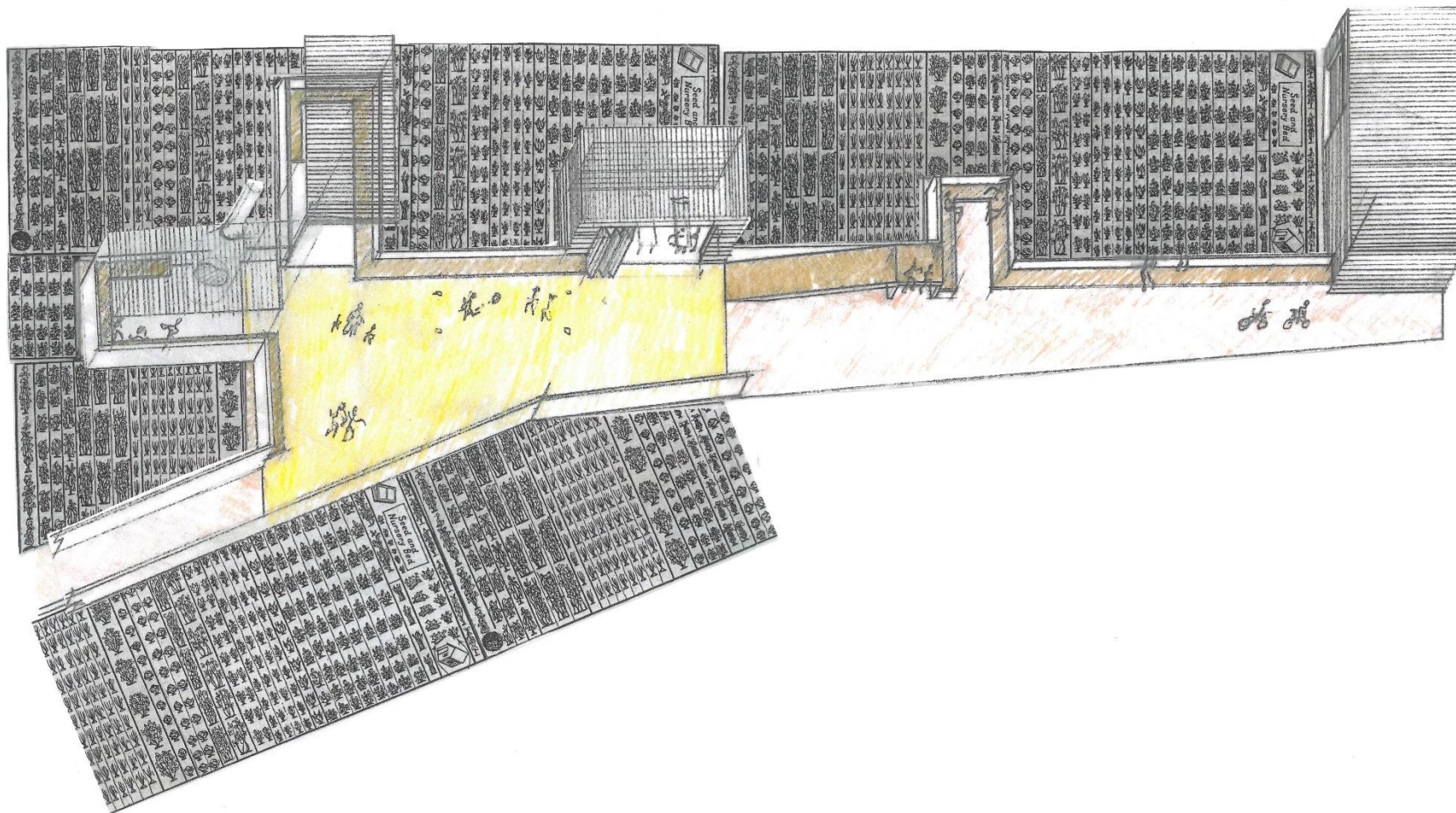
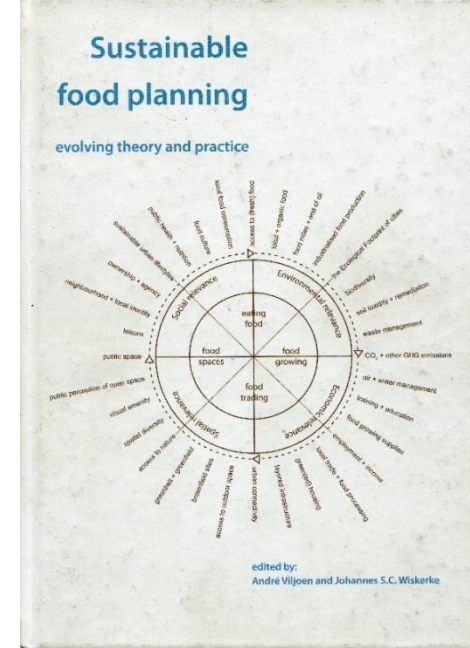
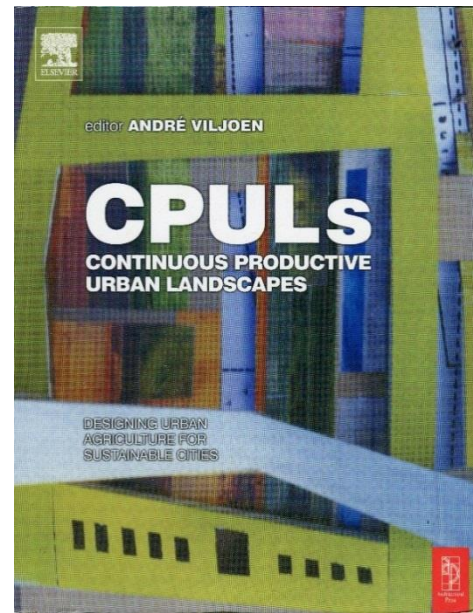


image: Bohn&Viljoen – 2019

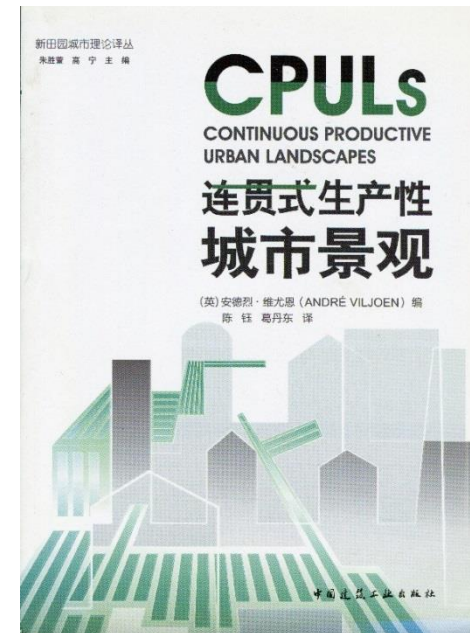
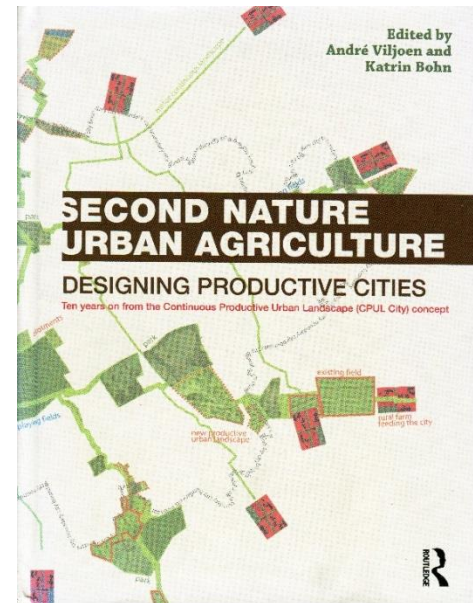
2005



2010

References for the CPUL concept.
The end, thank you!

2014



2015