

TRCA Urban Agriculture Program

Nerima City World Urban Agriculture Summit

November 30, 2019

Sonia Dhir, MCIP, RPP

**Senior Program Manager - Humber and Urban Agriculture Program
Lead**

Agenda

- Introduction
- Overview of TRCA
- TRCA Agricultural Lands
- Agricultural Land Use Planning and Policy
- TRCA Urban Agriculture Program – Case Studies
- Conclusion

The information contained in this presentation is copyright © Toronto and Region Conservation Authority

Overview of TRCA

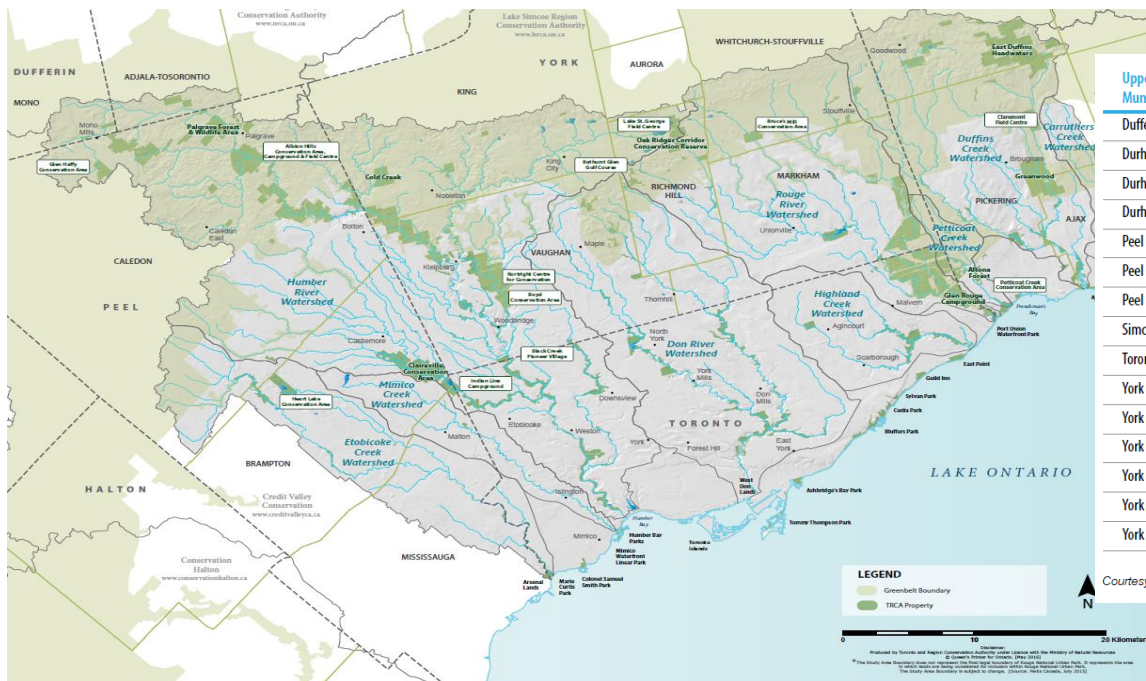
About TRCA: Our History and Mission

- Established under the Conservation Authorities Act, TRCA brings over 60 years of experience
- Our mission, which is based on our Provincial mandate, is to protect, conserve and restore natural resources and develop resilient communities through education, the application of science, community engagement, service excellence and collaboration with our partners



About TRCA: Our Jurisdiction

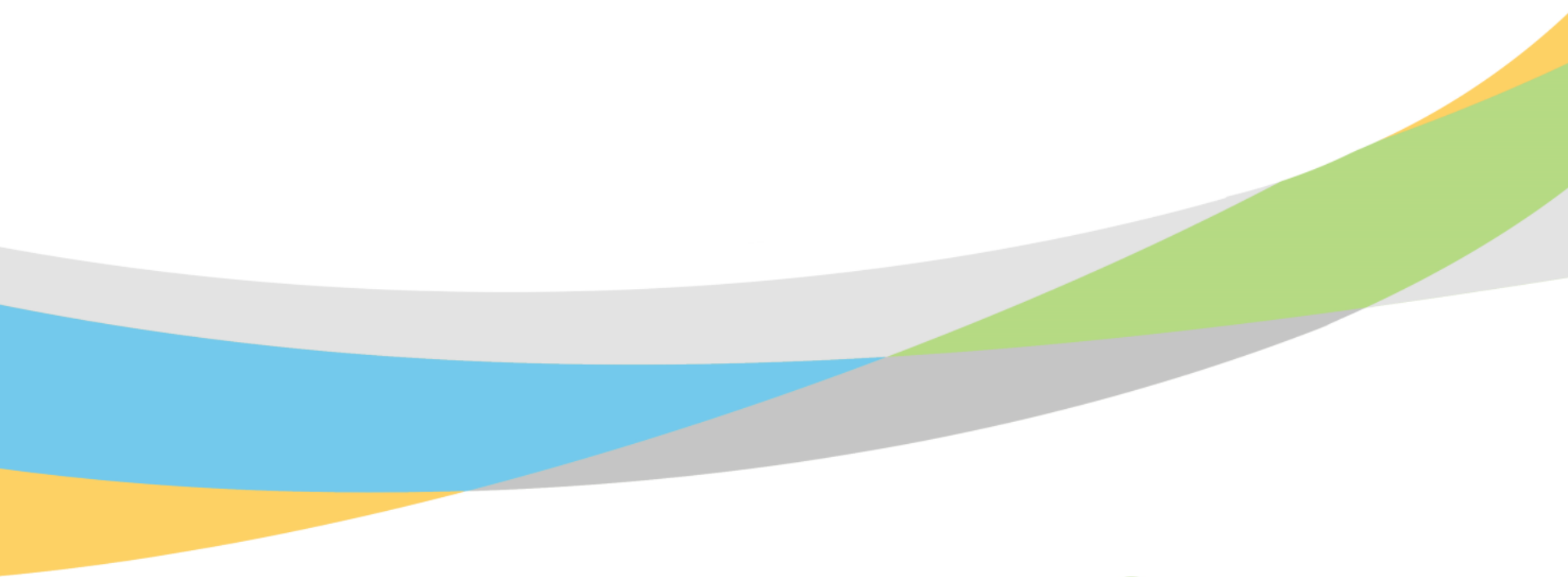
- As 1 of 36 provincial conservation authorities, TRCA's area of jurisdiction includes 3,467 square kilometres, 2,506 on land and 961 water-based
- The nine watersheds and corresponding waterfronts that comprise this area impact 6 Upper Tier Municipalities and 15 Lower Municipalities



Upper Tier Municipality	Lower Municipality	% of Municipality Population within TRCA's Jurisdiction
Dufferin County	Mono (Town)	5
Durham Region	Ajax (Town)	86
Durham Region	Pickering (City)	95
Durham Region	Uxbridge (Township)	19
Peel Region	Brampton (City)	63
Peel Region	Caledon (Town)	55
Peel Region	Mississauga (City)	33
Simcoe County	Adjala-Tosorontio (Township)	4
Toronto	Toronto (City)	100
York Region	Aurora (Town)	4
York Region	King (Township)	45
York Region	Markham (City)	100
York Region	Richmond Hill (Town)	99
York Region	Vaughan (City)	100
York Region	Whitchurch-Stouffville (Town)	43

Courtesy of the Ministry of Natural Resources and Forestry - 2018 Data.

TRCA Agricultural Lands



TRCA Agricultural History

- Land acquired in 1940's for flood and erosion control
- Agriculture has been an interim use until 2008
- Livestock and traditional cash crops
- Prime Agricultural Lands (class 1-3)
- Manage an active inventory of approx. 689 acres



TRCA Agricultural Lands

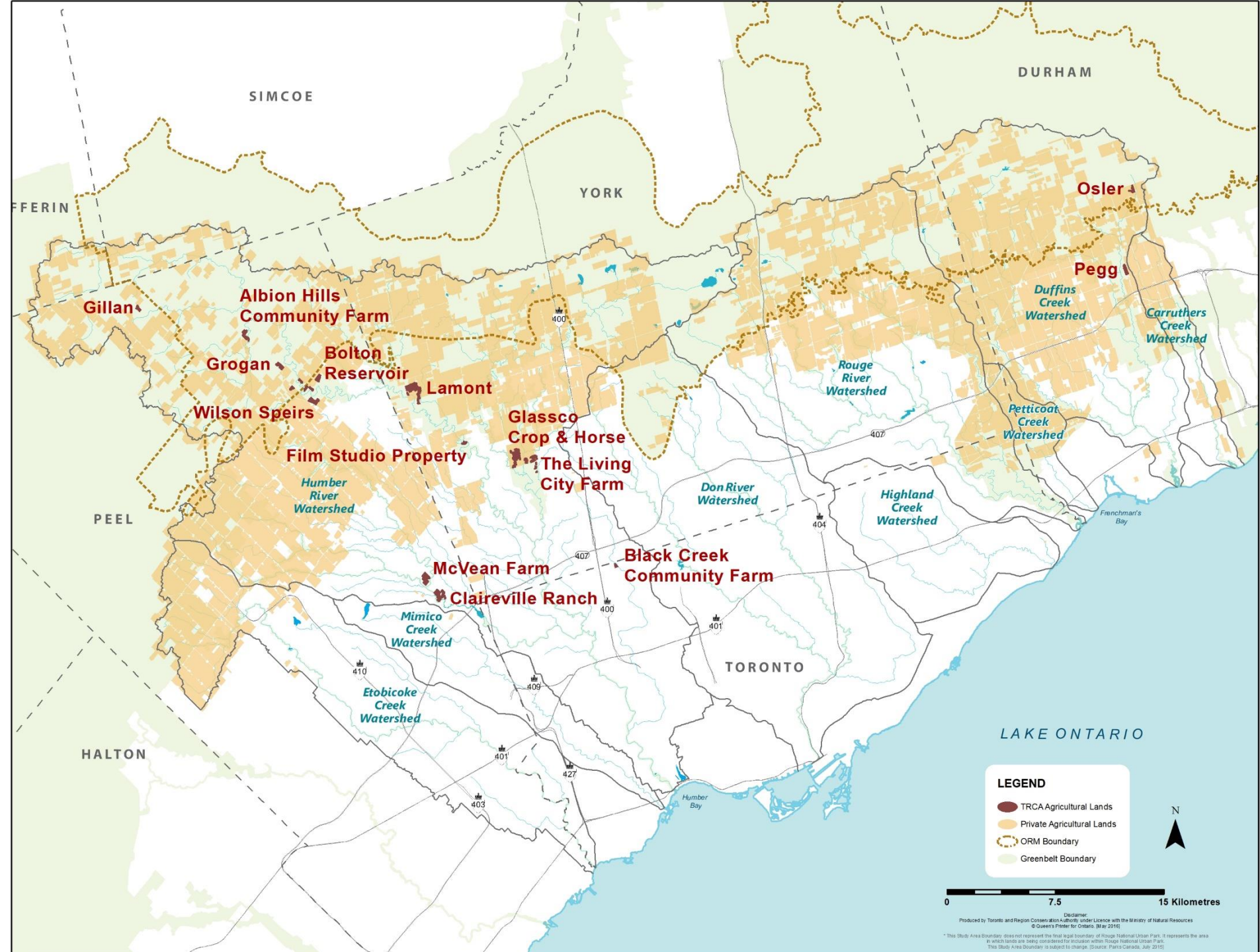
Conventional Farms:

- 10 properties
- 605 acres of agricultural land
- 10 farmers

Urban Farms:

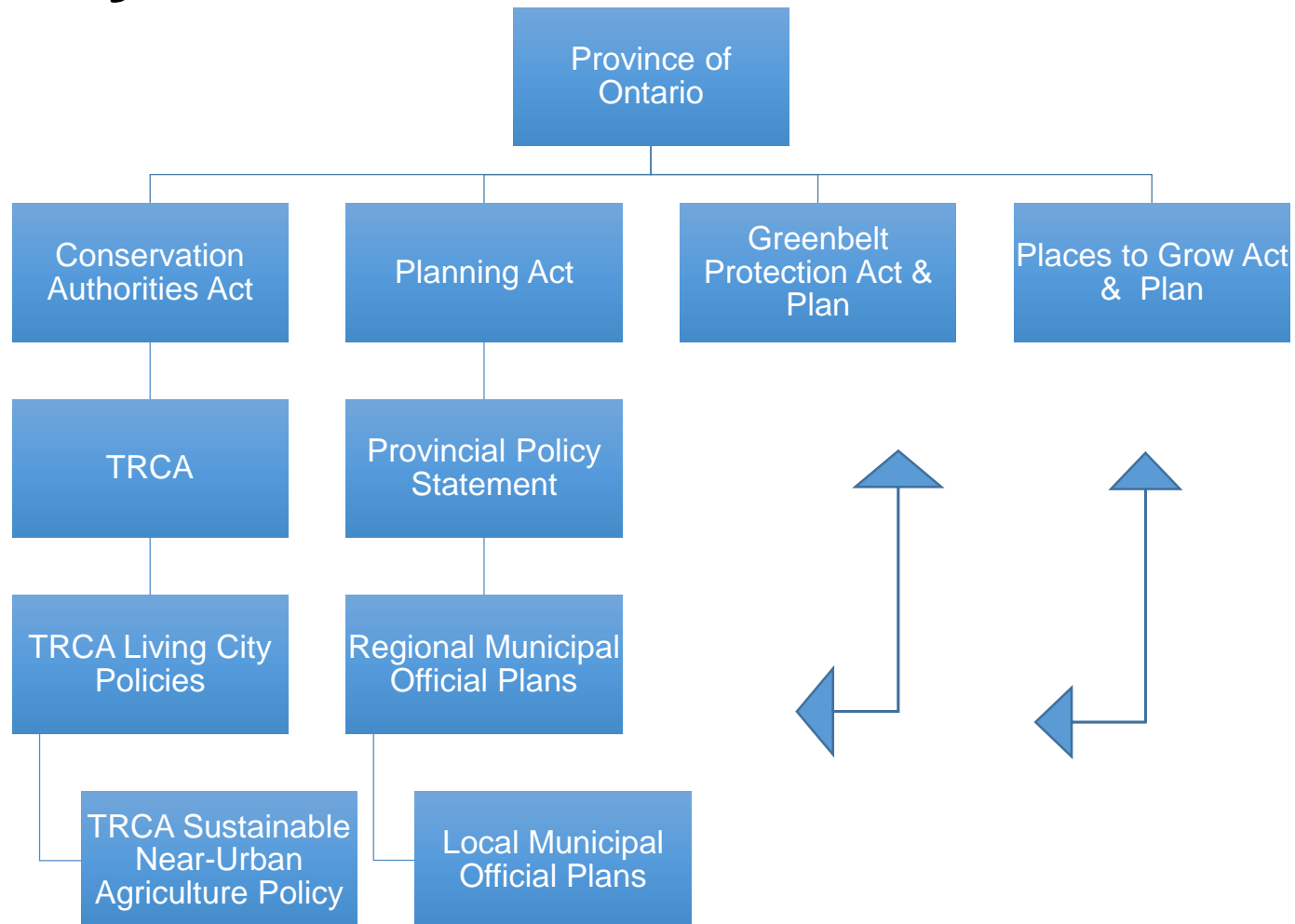
- 4 properties
- 84 acres of agricultural land
- 13 farmers





Agricultural Land Use Planning and Policy

Agricultural Land Use Planning and Policy



TRCA Sustainable Near-Urban Agriculture Policy (2008)

- Maintain current inventory of agricultural lands
- Make public land available for local food production
- Permit multi-year leases (up to 5 years)
- Permit existing tenancy
- Promote innovative and sustainable agricultural models and diverse crops
- Create new partnerships



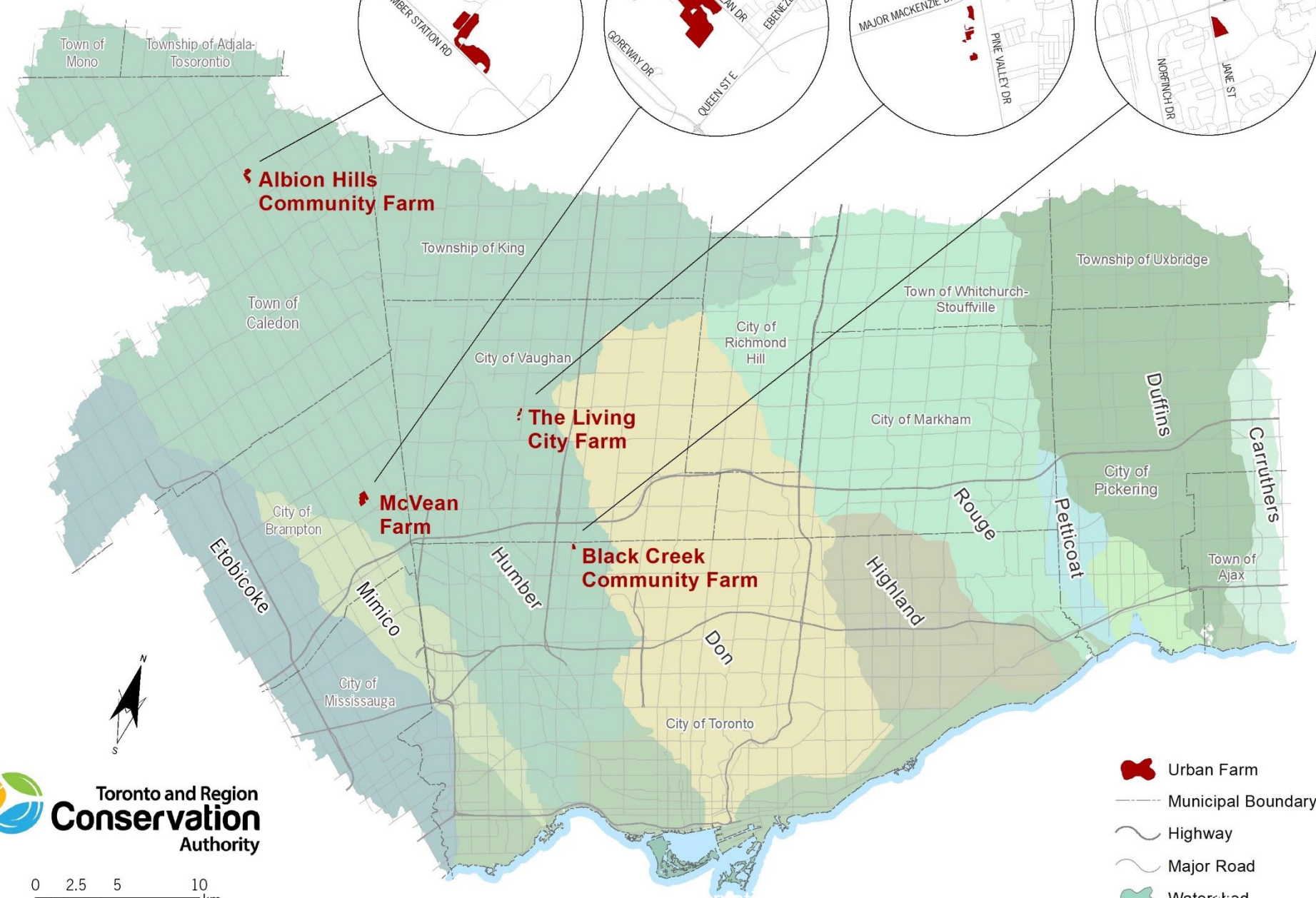
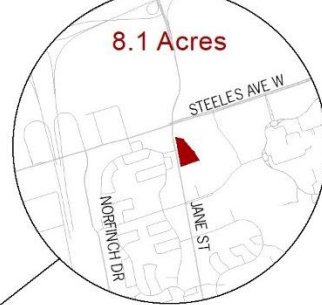
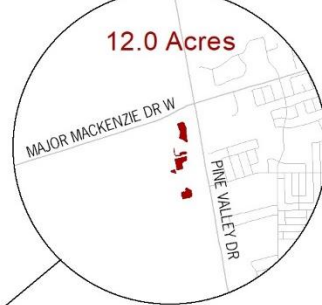
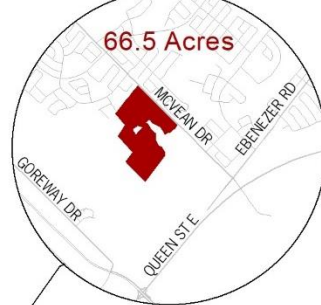
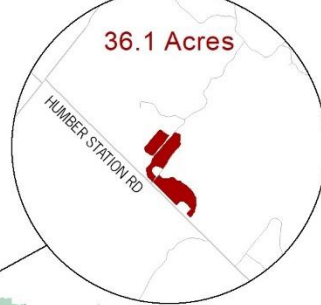
TRCA Urban Agriculture Program

www.trca.ca

TRCA and Sustainable Communities

- Provides positive influence for adjacent natural heritage
- Reduces TRCA's ecological footprint
- Promotes social equity and food security
- Provides opportunities for community economic development
- Celebrates cultural diversity by growing new and diverse crops





TRCA Urban Agriculture Program

- Access to land
- Infrastructure improvements
- Planning and approvals
- Event and programming support
- Funding administration
- Marketing and communications support
- Internal TRCA coordination on urban agriculture matters
- Partnership development
- Lease administration
- EFPs and BMPs
- Organic certification
- Community engagement



McVean Farm, Brampton

- 37 + 10 acres
- Incubator model
- Up to 20 individual farmers
- Access to land, equipment, infrastructure
- Community gardens
- Commercializing world crops











Black Creek Community Farm, Toronto

- Previously farmed as Toronto Urban Farm
- 8 acres at Jane and Steeles
- Community gardens
- Local food procurement to TRCA facilities
- Educational programming and farm camp
- Community hub within a low-income neighbourhood
- CSAs, on farm shops, wholesale markets
- Annual farm fundraiser









Please do not
remove
material (straw,
sticks, bamboo)
from these bee
hotels because
this is the bees'
habitat. Thank-
you!



The Living City Farm, Vaughan

- 12 acres within The Kortright Centre
- Children's learning garden
- On-farm educational programming
- Livestock
- Adult gardening workshops
- Farm gate sales at Kortright









Albion Hills Community Farm, Caledon

- 17 acres within Albion Hills Conservation Area
- 0.41 acres of community gardens
- On-farm educational programming
- Collaboration with Albion Hills Conservation Area





HARVEST #12
♥ Zucchini 3
♥ Beans 1
♥ Carrots 1
♥ Tomato 1
♥ Onions 1
♥ Cabbage 1
♥ Radish 1

HARVEST #13
♥ Zucchini 1
♥ Beans 1
♥ Carrots 1
♥ Tomato 1
♥ Onions 1
♥ Cabbage 1
♥ Radish 1





Thank you!

Sonia Dhir

sonia.dhir@trca.ca

www.trca.ca